

SHADING WITHOUT BLOCKING
THE VIEW
A GREAT COMPANION FOR
THE BALCONY

WR120 WINDPROOF ROLLER BLINDS

- ▶ Smart balancer, allows the zipper vertically into the zipper guide rail, ensuring
- ▶ a flatter fabric and making the windproof roller blinds more durable.
- ▶ Snap side rails and three-piece side rails (finished products) are available.
- ▶ Four operating systems: motorized, hand push, chain control, hand crank. Using 78 double-layer tube, the width can reach over 5.4 meters; using 63 thick tube, the height can reach over 5 meters.



 INDOOR WINDPROOF
ROLLER BLINDS SERIES

CORE TECHNOLOGY

01

HOLLOW STRUCTURE HIGH-TEMPERATURE RESISTANT ZIPPER GUIDE PREVENTS ZIPPER FROM DERAILING.

Patent number:2021308068060

CORE TECHNOLOGY

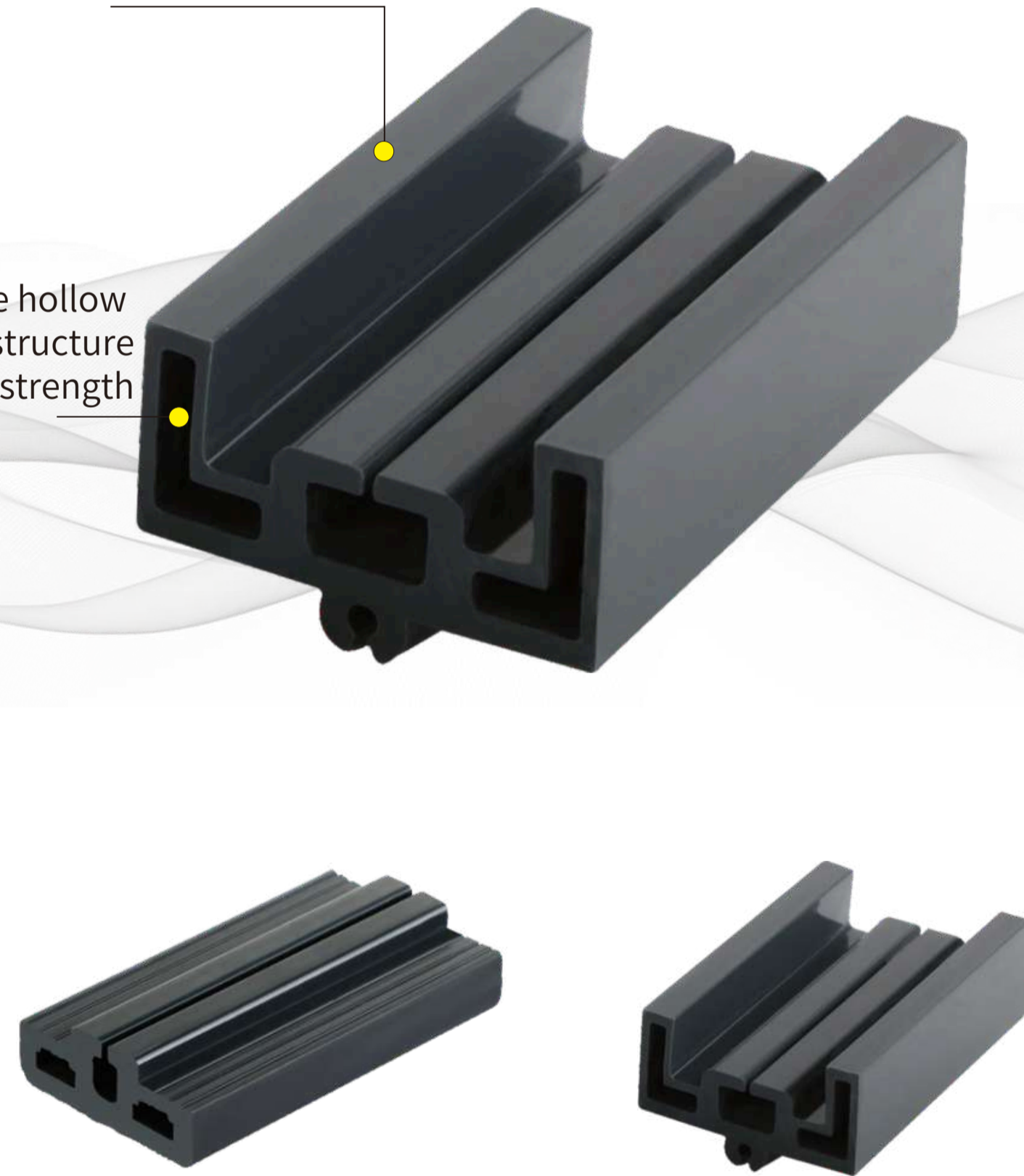
02

SMART BALANCER MAKES THE WINDPROOF ROLLER BLINDS MORE DURABLE

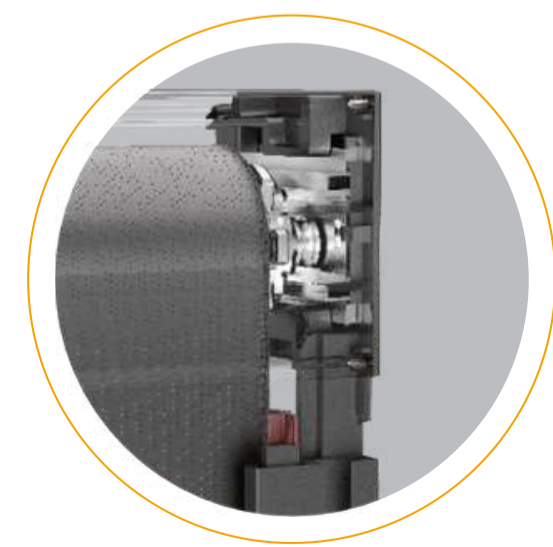
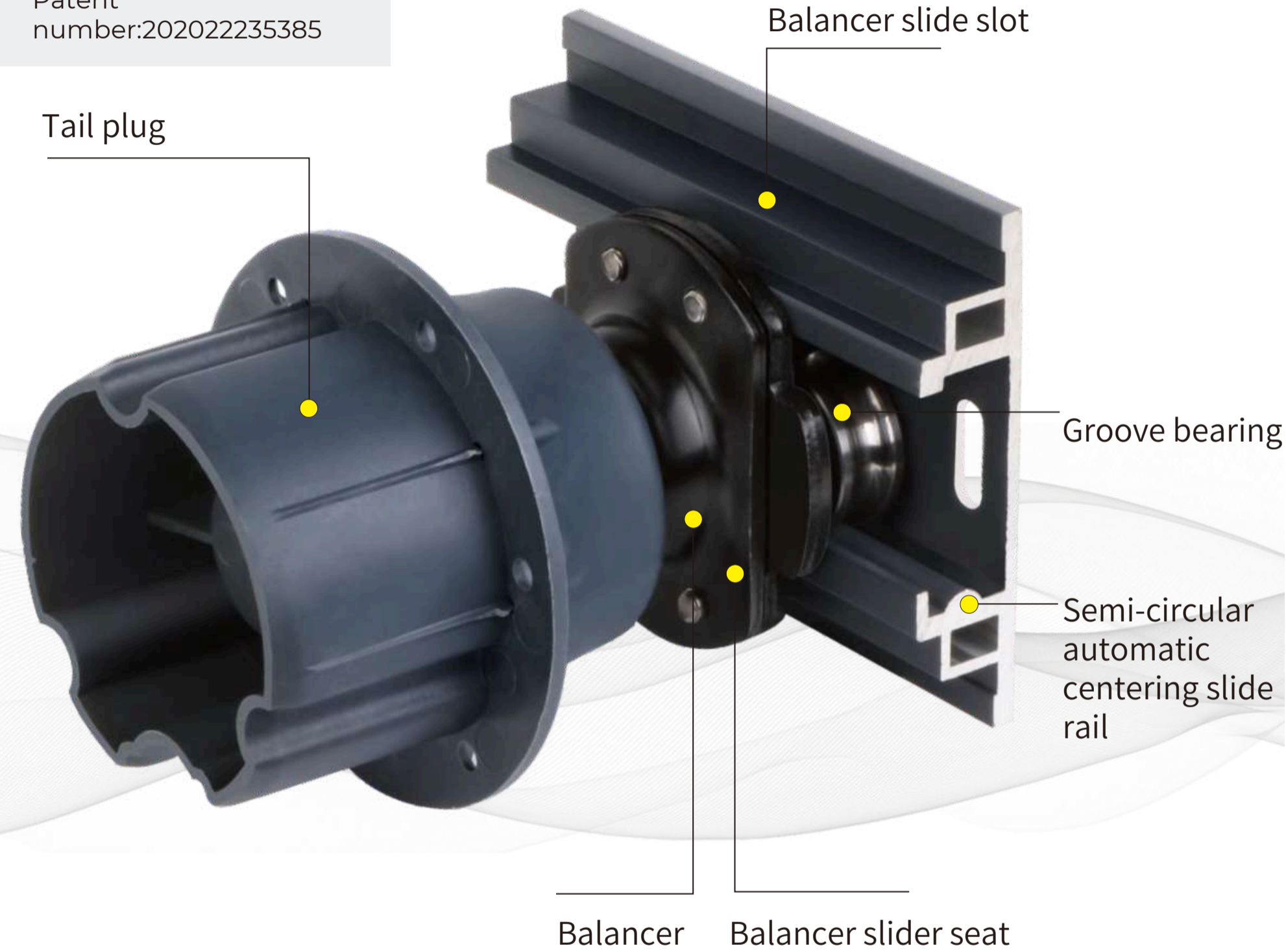
Patent number:202010010690.4
Patent number:202022235385

High temperature resistant, antioxidant material

Unique hollow structure better strength



Tail plug



ZIPPER ENTERS THE ZIPPER GUIDE RAIL VERTICALLY, PROVIDING FULL PROTECTION AND ENSURING FLATTER FABRIC.

CORE TECHNOLOG

03

**FABRIC ORIENTED TECHNIQUE
MAKES THE WINDPROOF
ROLLER BLINDS MORE FLAT**

Patent
number:ZL202130560744.X



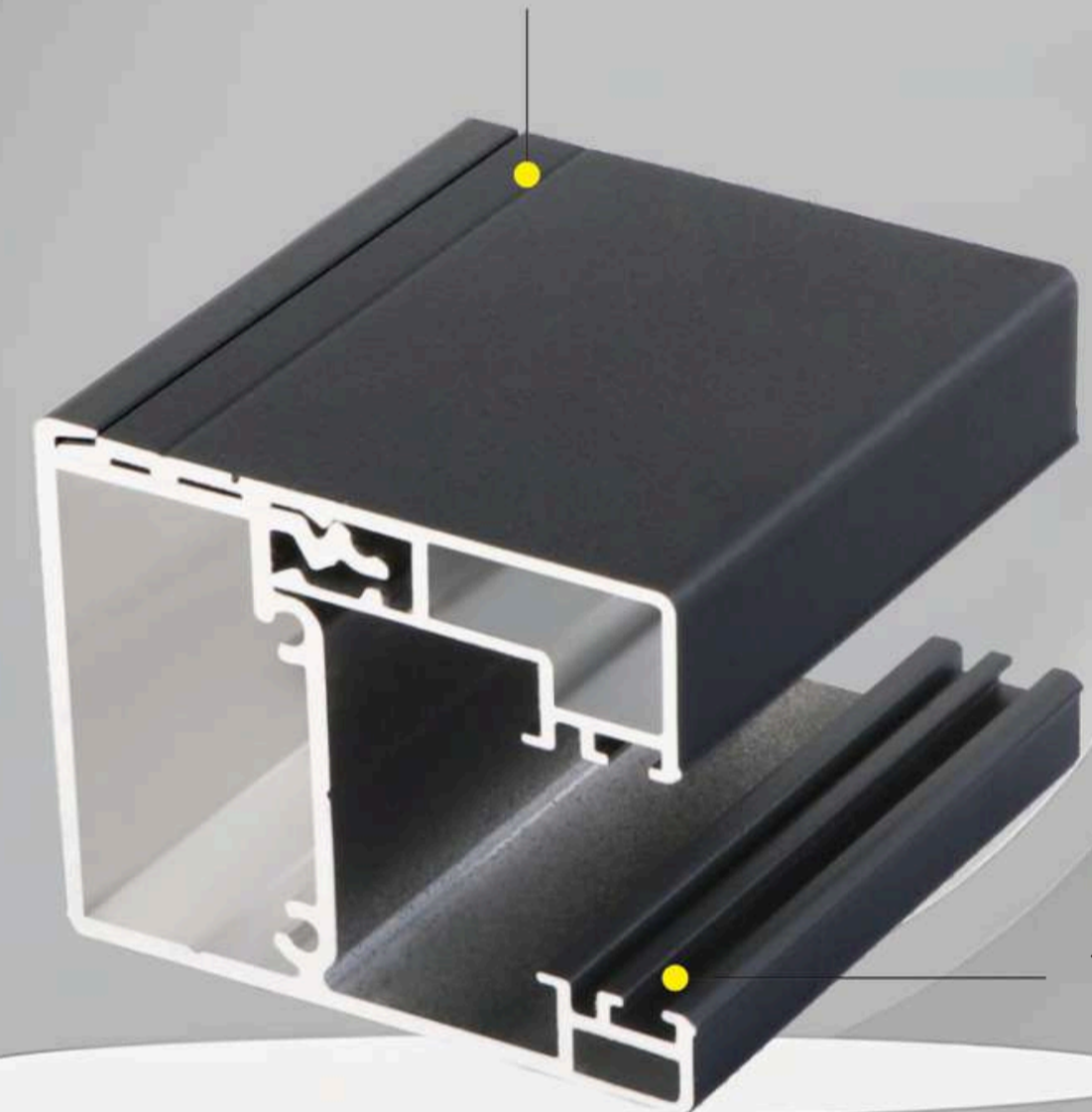
CORE TECHNOLOG

04

**NO SCREWS INSTALLATION
SIDE RAIL, MORE
CONVENIENT DISASSEMBLY**

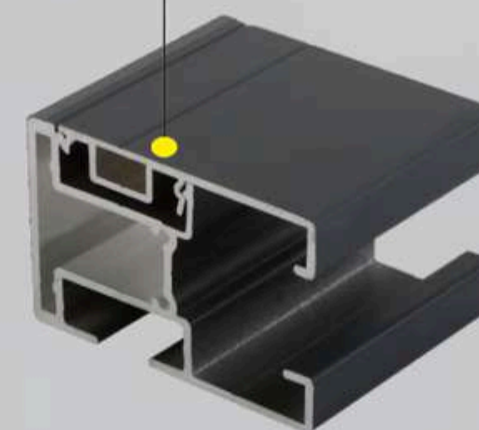
Patent
number:ZL202120706702760

Insert bayonet diagonally for easy disassembly



Silencer bar can
be installed

External buckle type, better wind resistance

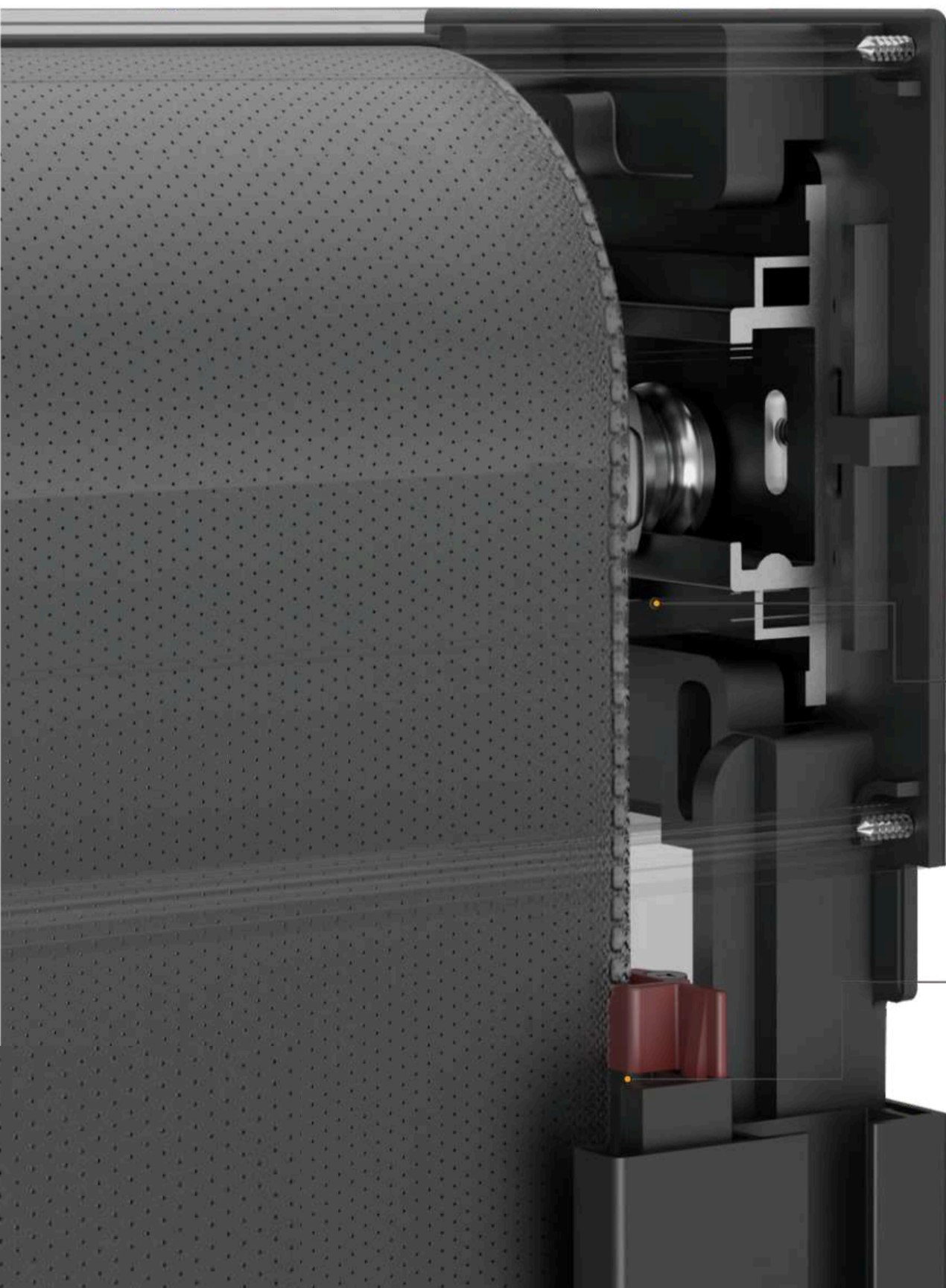


WR120 snap side rail

- ▶ Equipped with wearresist ant nanostrips to reduce fabric friction noise.
- ▶ Makes the fabric zipper enter the guide rail vertically.
- ▶ With the assistance of the nanostrip, the balancer automatically adjusts the center position based on the amount of fabric wound. This ensures that the fabric is protected at a small angle, extending its lifespan.

WR120 WINDPROOF ROLLER BLINDS APPLICATION FEATURES

- 120x120mm cassette system.
- Smart balancer makes the windproof roller blinds more durable.
- External buckle side rail, excellent windproof performance.
- Double zipper guide for better strength. Using 78 double layer tube, the width can reach over 5.4 meters; using 63 thick tube, the height can reach over 5 meters. The operating systems include chain control, hand push, hand crank, and motorized options, meeting the diverse needs of customers.



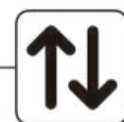
SMART BALANCER

Makes the windproof roller blinds more durable



FLATTER FABRIC

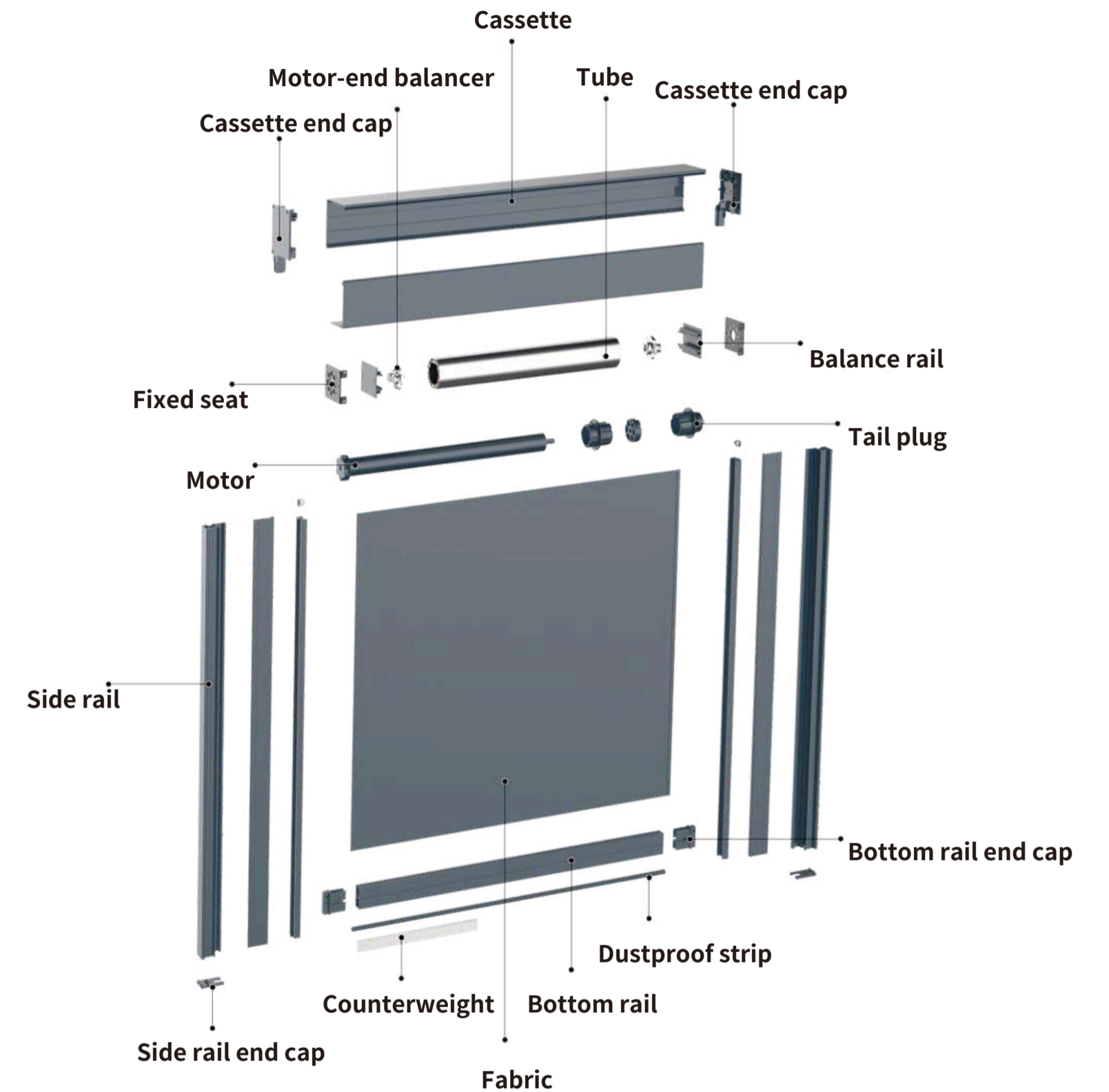
Smart balancer: Ensures that the fabric is released or retracted from the roll at an angle parallel to the zipper guide, making the fabric run more flat and straight.



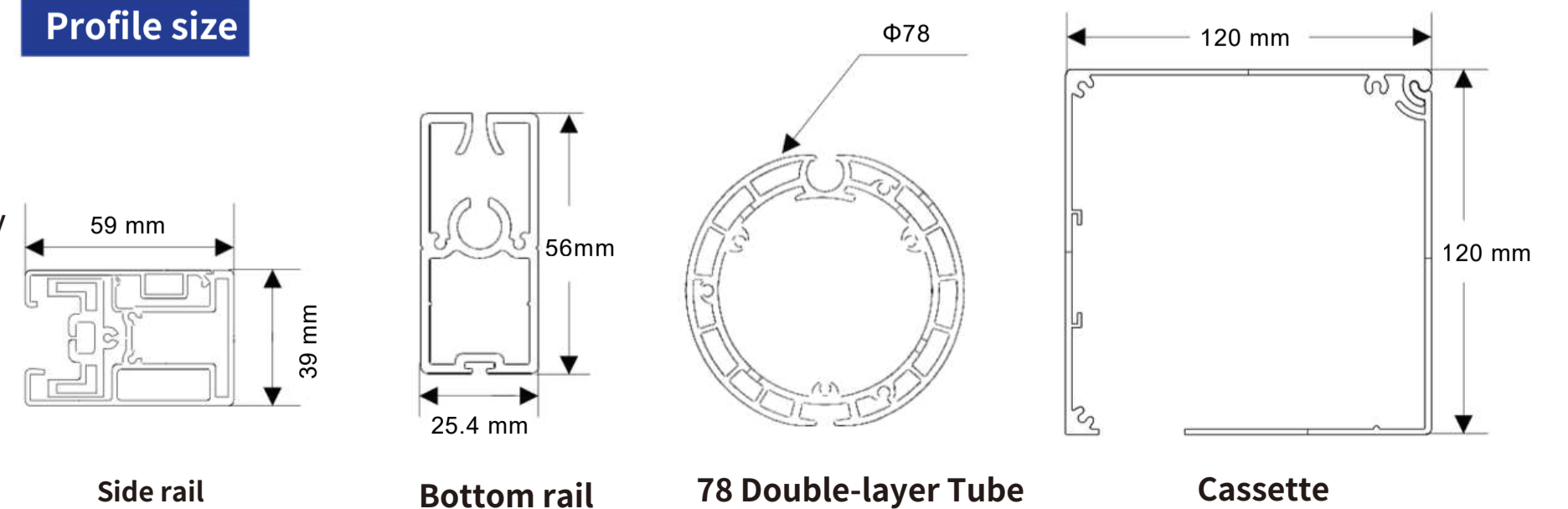
FULLY PROTECTING THE ZIPPER

Smart Balancer: It can automatically adjust the center position of the tube according to the amount of fabric, ensuring that the zipper always enters the zipper guide at a vertical angle, fully protecting the zipper and extending the service life of the system.

WR120 WINDPROOF ROLLER BLINDS EXPLODED VIEW



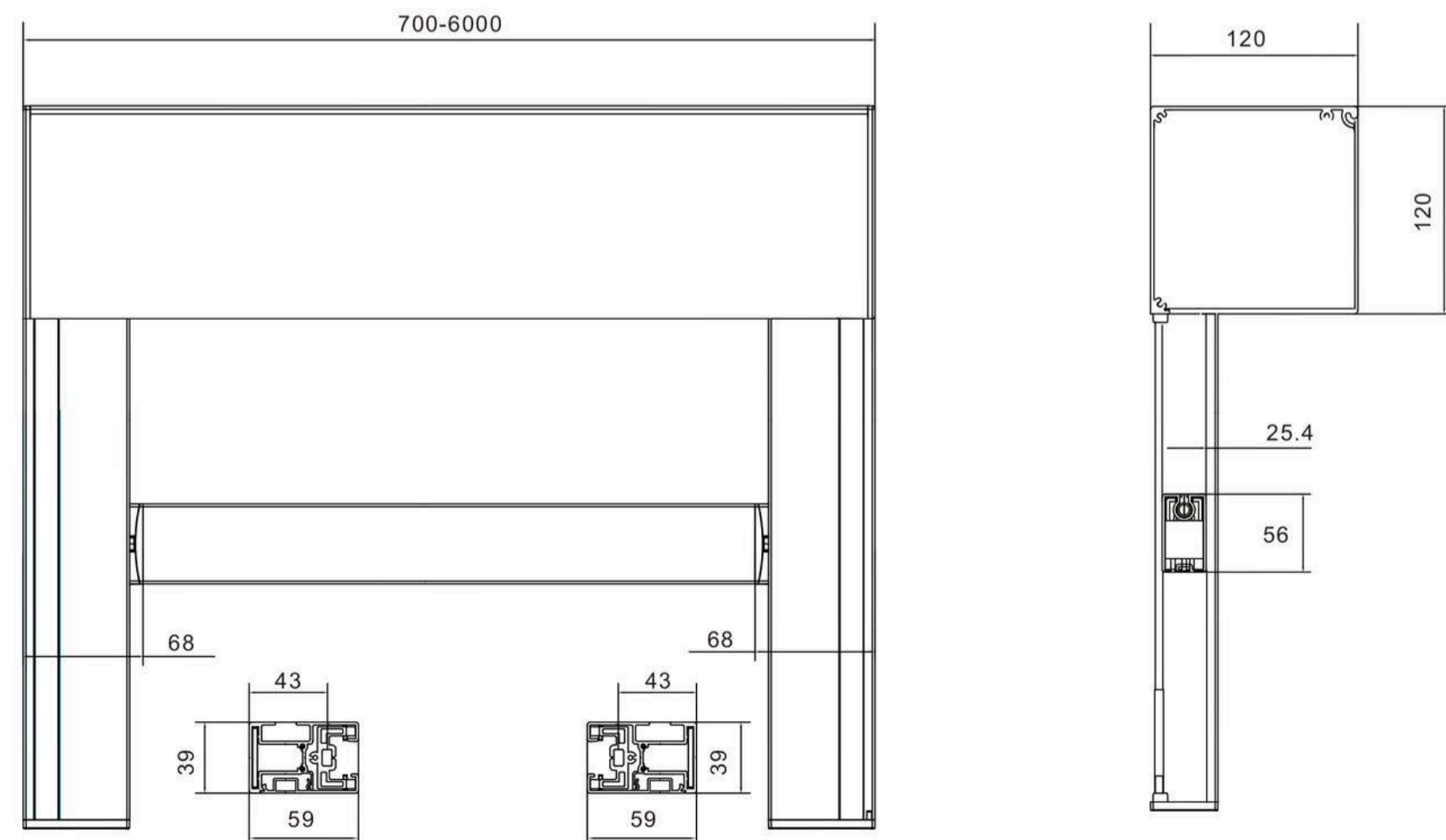
Profile size



WR120 Windproof Roller Blinds Dimension

THE SPECIFICATION RECOMMENDATION OF WR120 WINDPROOF ROLLER BLINDS

High	Using 63mm tube, the maximum height can exceed 5 meters, but the width should not be too wide to avoid tube bending. For 78mm tube, the width be less than 5 meters and the height be less than 3.5 meters. For 78mm double-layer tube, the width can exceed 5.4 meters, the height be less than 3 meters.						Minimum size achievable with various drive systems
Width	Width<3m			Width			
Category	Drive system	Tube	Bottom rail	Drive system	Tube	Bottom rail	
Motorized	35 tubular motor AM35-10/17, 10NM	63 Tube	Heavy-duty bottom rail	35 tubular motor 10NM	78 Tube	Heavy-duty bottom rail	0.7M
	45 tubular motor 20NM	63 Tube	Heavy-duty bottom rail	45 tubular motor 20NM	78 tube (Double-layer tube width can exceed 5.4 meters)	Heavy-duty bottom rail	0.7M For 90mm tube, use the 150mm cassette; AOK AM45-20/17 motor; 15NM or 30NM optional; standard is 20NM.
Hand push	T1001 Locking torsion spring head	63 Tube	Easy-pull bottom rail	T1001 Locking torsion spring head	63 Tube	Easy-pull bottom rail	0.92M
Chain control	WR120 System 63 tube universal chain clutch	63 Tube					0.4M
Hand crank	With fixed plate B09-C turbo transmission	63 Tube	Heavy-duty bottom rail	With fixed plate B09-C turbo transmission	63 Tube	Heavy-duty bottom rail	It is recommended to be below 4 meters. 0.35M

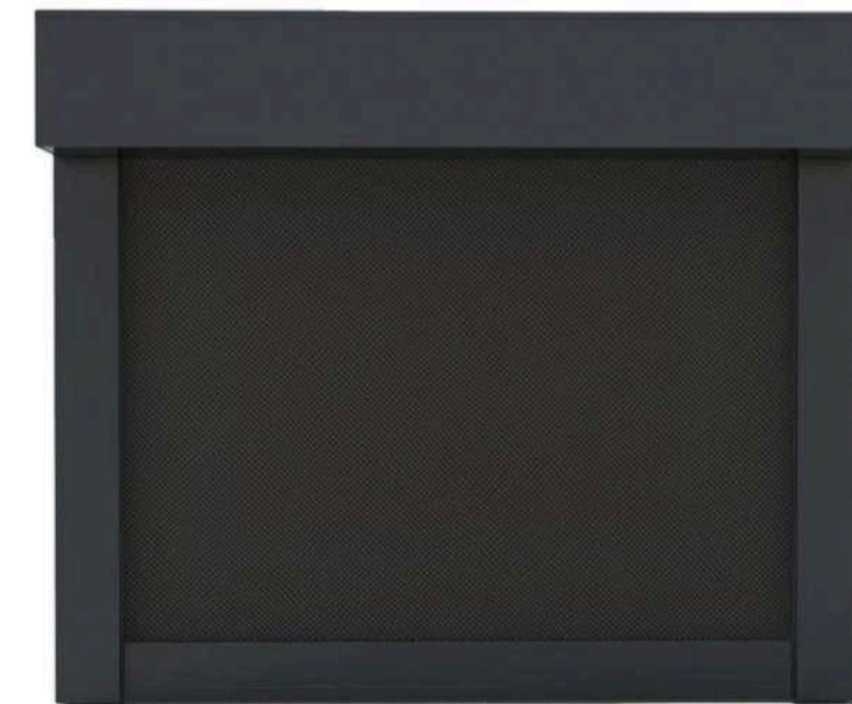


WR120D LIGHTSTRIP-EMBEDDED WINDPROOF ROLLER BLINDS

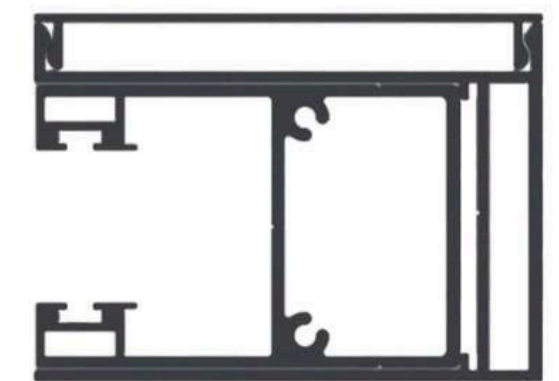


Core highlights:
Intelligent lighting enhances nighttime ambiance.
 WR120D Windproof roller blinds innovatively integrates an embedded light strip design, not only maintaining the high-performance characteristics of a windproof roller blinds but also adding an elegant lighting atmosphere to your outdoor space. Whether it's for a nighttime garden party or a quiet balcony retreat, WR120D provides soft and uniform illumination, perfectly balancing functionality and aesthetics.
 Suitable Scenes: Pavilions, sunrooms, balconies, outdoor leisure areas, etc.

WR120E WINDPROOF ROLLER BLINDS

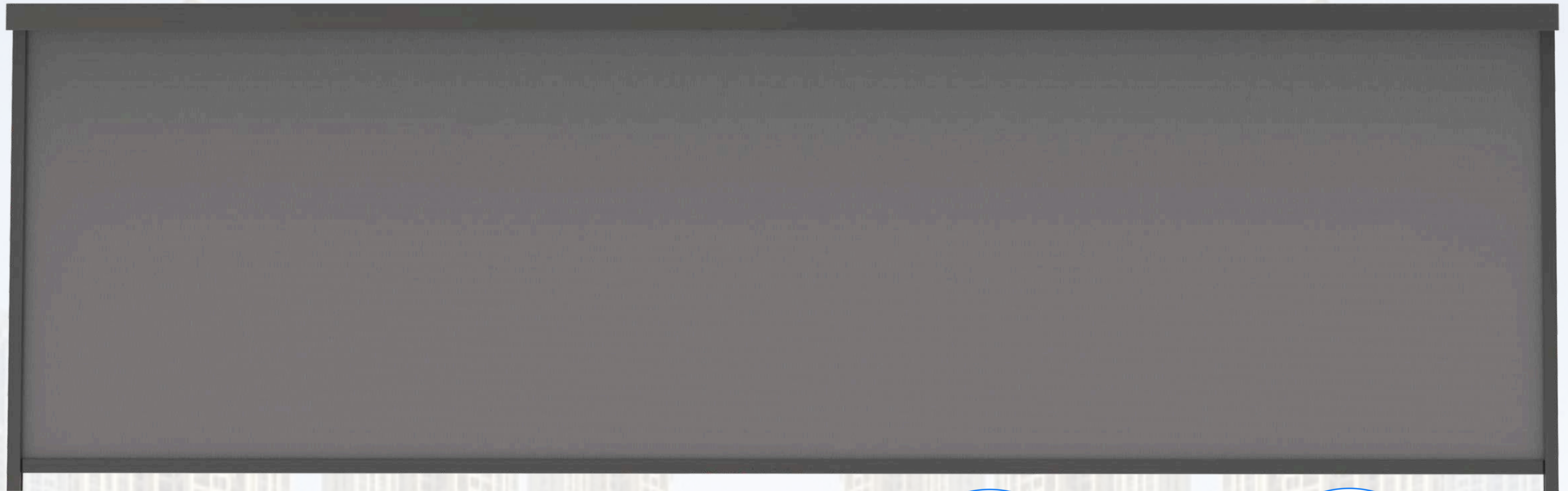


Core highlights:
Flexible adjustment for a perfect fit.
 WR120E Windproof roller blinds features an adjustable side rail design, easily accommodating slightly tilted walls or irregular installation environments. It ensures the roller blinds fits tightly against the wall for seamless light blocking.
 Suitable Scenes: Hotels, office buildings, sunrooms, tilted walls, etc.



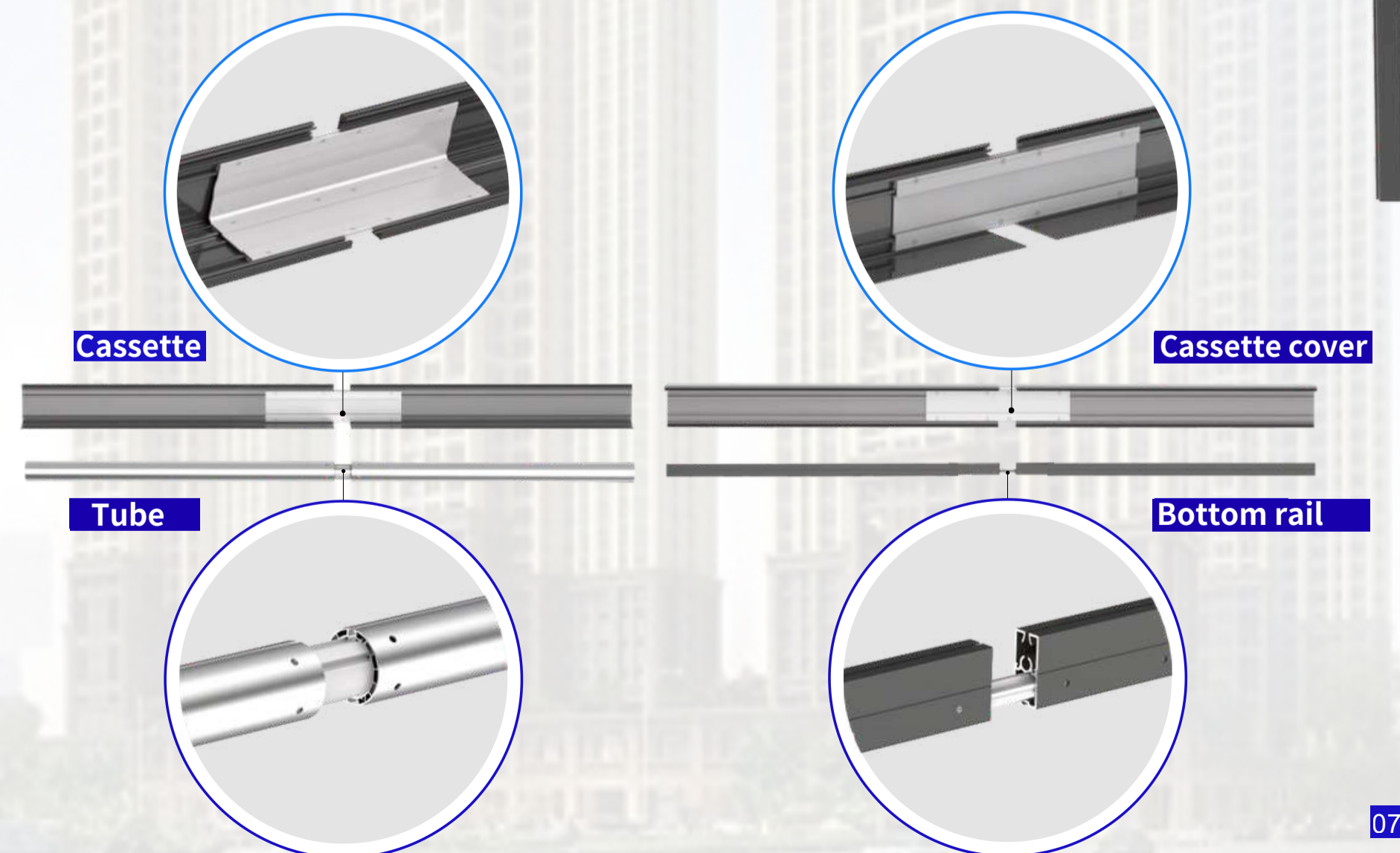
Side rail adjust support

WR120C WINDPROOF ROLLER BLINDS (CONNECTABLE)



PROFILE CONNECTION ▶

- ▶ Cassette, tube, and bottom rail can be connected.
- ▶ Solves the industry pain point of transporting extra-wide windproof roller blinds upstairs. On-site assembly of finished products.
- ▶ Width not exceeding 5 meters.



WR120-175 DOUBLE WINDPROOF ROLLER BLINDS



Inner layer uses windproof roller shutters, outer layer can be fitted with roller blinds, roman blinds, Shangri-La blinds, etc. Using the 30x35mm side rail system, compact and elegant. Using 63mm standard tubes, compatible with other 63mm tube accessories. All adopt plug-in installation.

WR120-175 DOUBLE WINDPROOF ROLLER BLINDS



STRUCTURAL FEATURES

- ▶ Inner layer uses windproof roller shutters, outer layer can be fitted with roller blinds, roman blinds, Shangri-La blinds, etc.
- ▶ Using the 30x35mm side rail system, compact and elegant.
- ▶ Using 63mm standard tubes, compatible with other 63mm tube accessories.

All adopt plug-in installation.

The system for normal roller blinds can be selected from chain control, spring, or motorized.

WR120-175 DOUBLE WINDPROOF ROLLER

- ▶ 120x175mm cassette system; installs semi-blackout and full blackout fabrics.
- ▶ All adopt plug-in installation, easy to install.
- ▶ Using the 30x35mm side rail system, compact and elegant.
- ▶ Using 63mm standard tubes, compatible with other 63mm tube accessories.



WR130-180 DOUBLE WINDPROOF ROLLER BLINDS



WR130-180 Motorized Double Windproof Roller Blinds

Width up to 4 meters, compatible with multiple smart home systems, widely used in hotels, homes, offices, and other venues.



WR130-180 Spring Double Windproof Roller Blinds

Width up to 4 meters, suitable for small to medium-sized, low-height, non-powered locations.

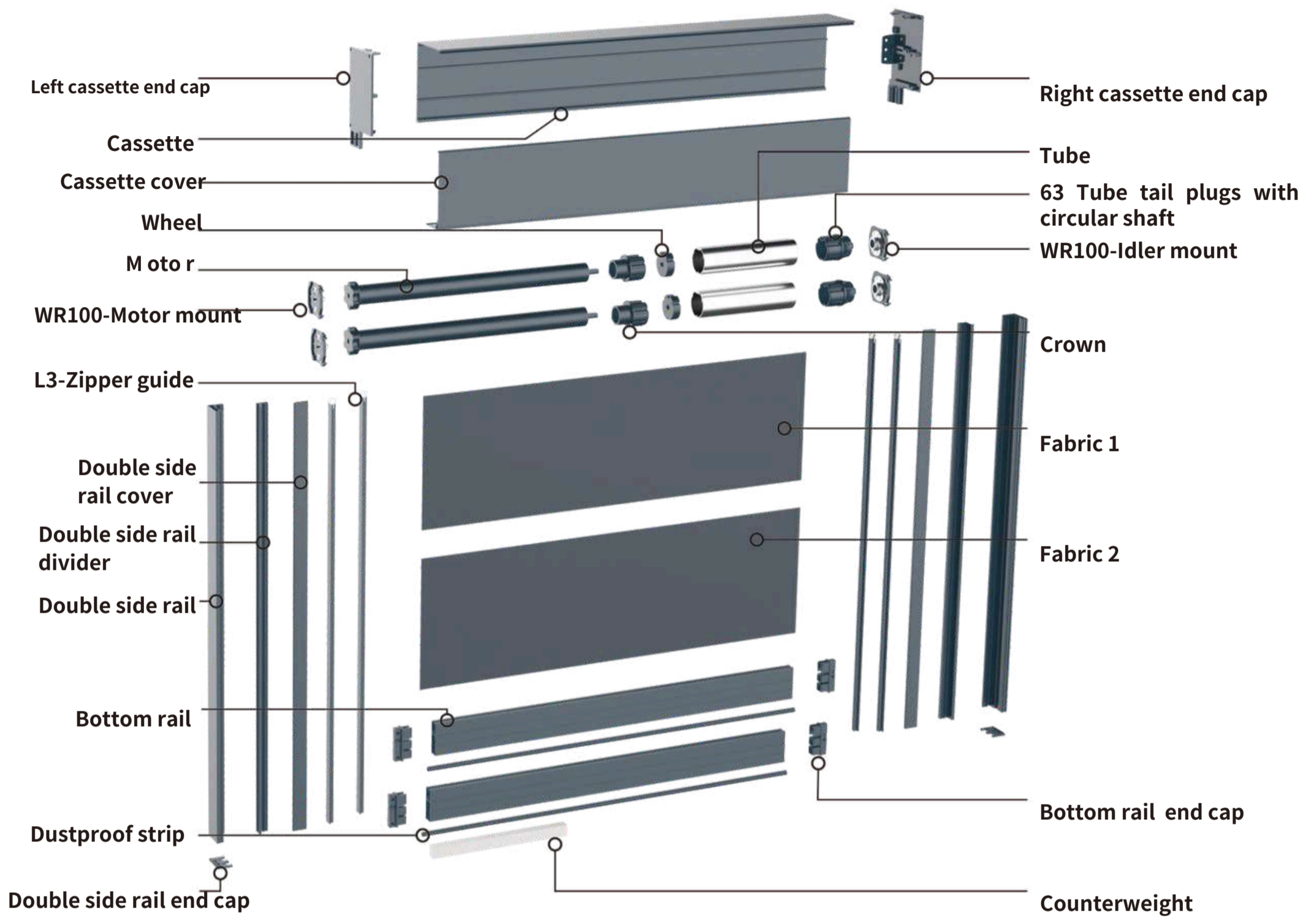


DOUBLE-LAYER INDOOR WINDPROOF ROLLER BLINDS

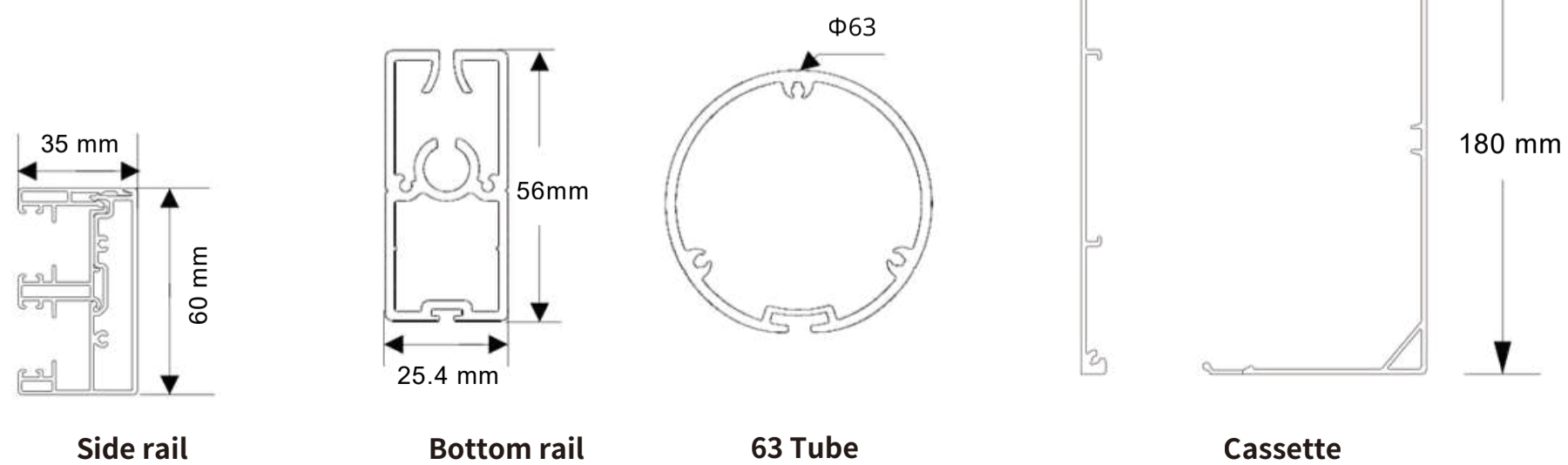
- ▶ 130X180mm cassette system; installs semi-blackout and full blackout fabrics. Button-
- ▶ type mount, easy to install.
- ▶ Side buckle double track, easy to install.
- ▶ Small zipper guide rail, compact structure. Uses extra-thick 63mm double-
- ▶ layer tube, windproof roller blinds width up to 3.8 meters, height up to 3.2 meters.
- ▶ Motorized/spring operating system, dedicated for indoor use.



WR130-180 DOUBLE WINDPROOF ROLLER BLINDS EXPLODED VIEW



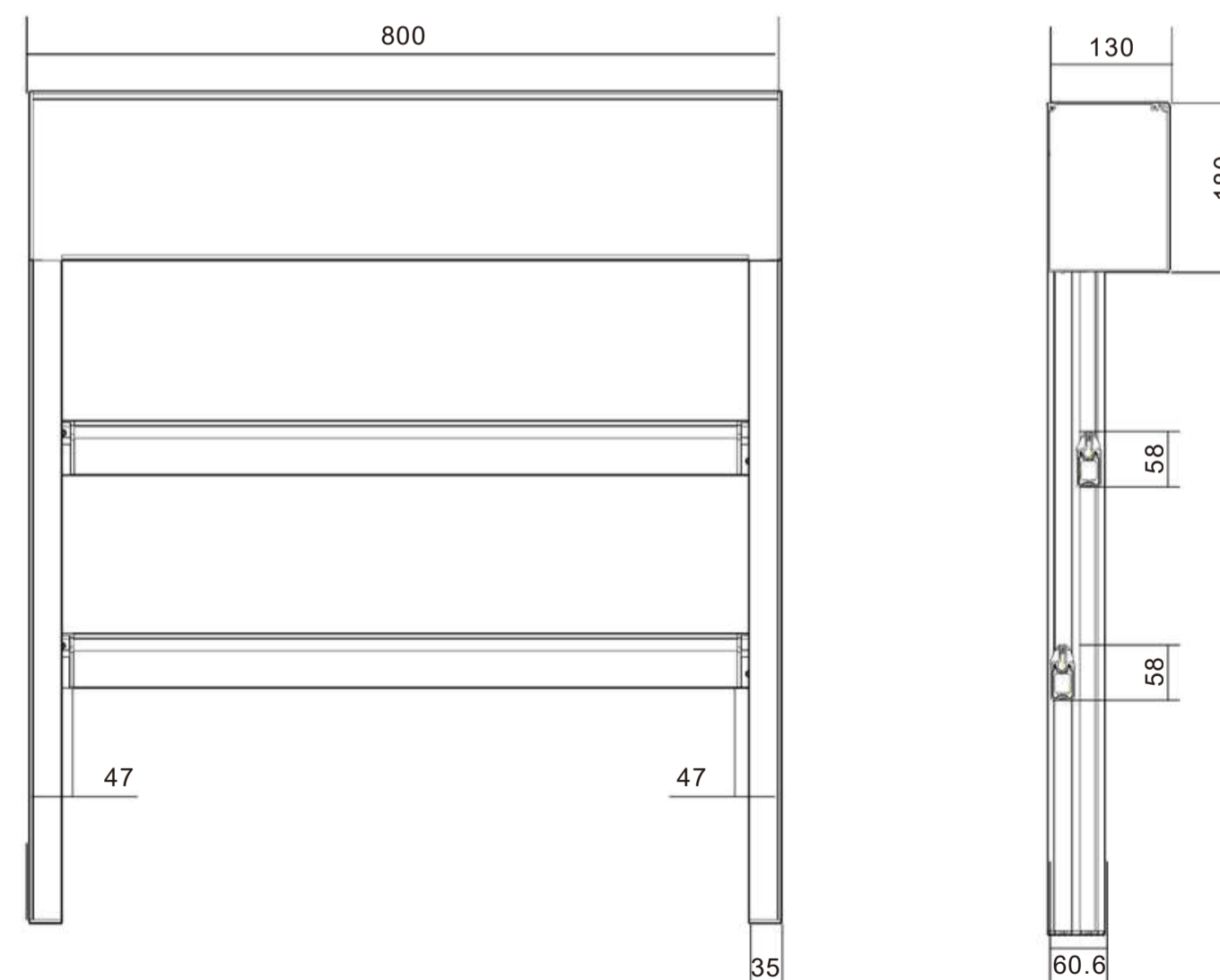
Profile size



WR130-180 DOUBLE WINDPROOF ROLLER BLINDS DIMENSION

THE SPECIFICATION RECOMMENDATION OF DOUBLE WINDPROOF ROLLER BLINDS

Width	width <2.5m				3m<width<4m				Remarks	Variousdrive systems can be made
	DriveSystem	Aluminum tube	Bottom rail	Maximum height	DriveSystem	Aluminum tube	Bottom rail	Maximum height		
Motorized	38 tubular motor AM35-10/17, 10NM	55 tube	Heavy duty bottom rail	5m	45 tubular motor 20NM-30NM	63 tube	Heavy duty bottom rail	3.5m		35 tubular motor 0.76M
		63 tube		3.5m						45 tubular motor 0.8M
Hand push	T1001 Spring system	63 tube	Easy to pull Bottom rail		T1001 Spring system	63 tube	Easy to pull bottom rail		It is recommended that the height is below 2.2 meters	0.8M



DK120-63 WIREROPE GUIDED WINDPROOF ROLLER BLINDS

Mainly used for outdoor shading in homes, hotels, office buildings, etc. When the width is 3 meters, the height can reach 5 meters.



- ▶ Motorized System
- ▶ Chain Control System
- ▶ Hand Crank System

STRUCTURAL FEATURES

1. This system uses a 4.0 stainless steel wire rope guide and can be installed outdoors.
2. It adopts the DK63 balanced springback self-locking idler and motor fixing system, using a 63mm tube, height can exceed 5 meters.
3. The main body of the cassette is installed with dimensions of 120x120mm, made of 2.5mm thick high-quality steel plate, and can be equipped with a cassette cover.
4. Elegant bottom rail; wire rope guide closure can be rear-mounted or side-mounted, made of aluminum alloy to meet different needs.

DK120-63 WIREROPE GUIDED WINDPROOF ROLLER BLINDS



WINDPROOF



SUN SHADE



RAINPROOF



THERMAL INSULATION

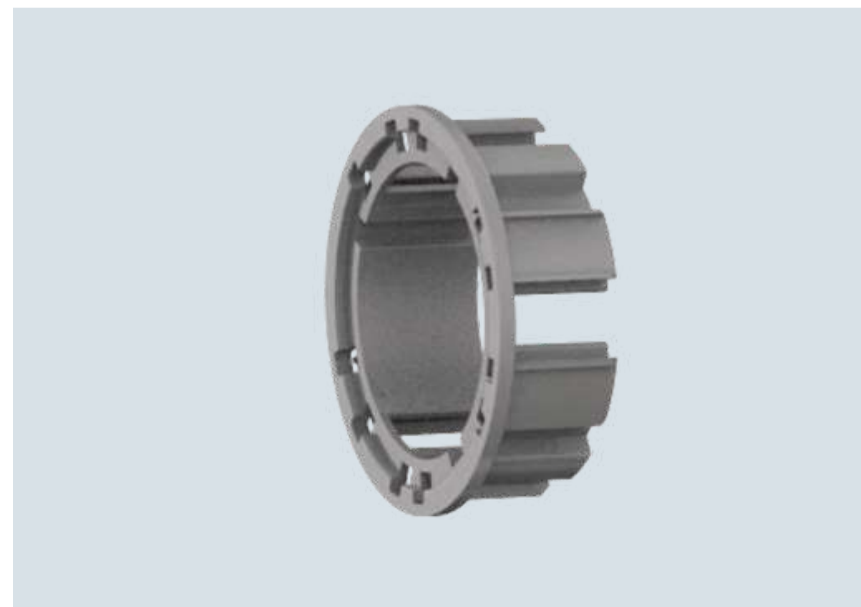
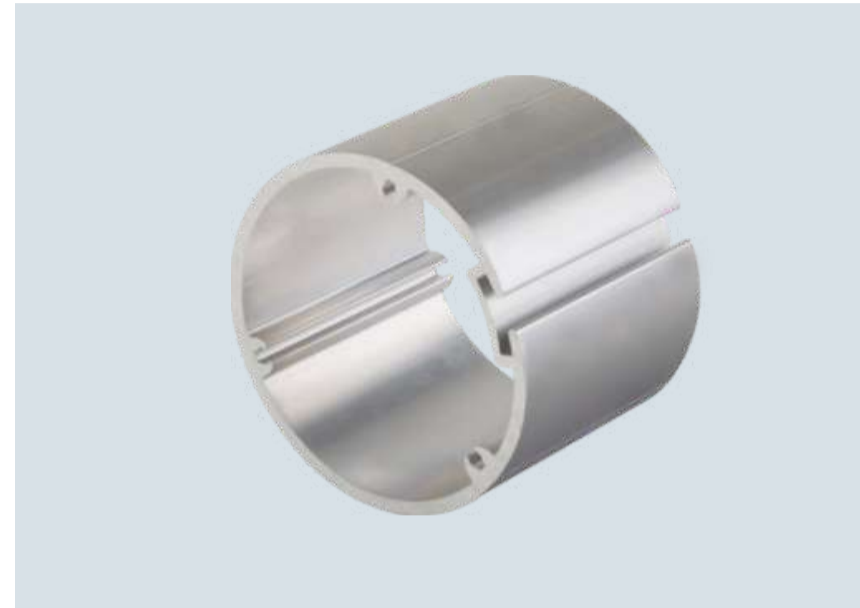
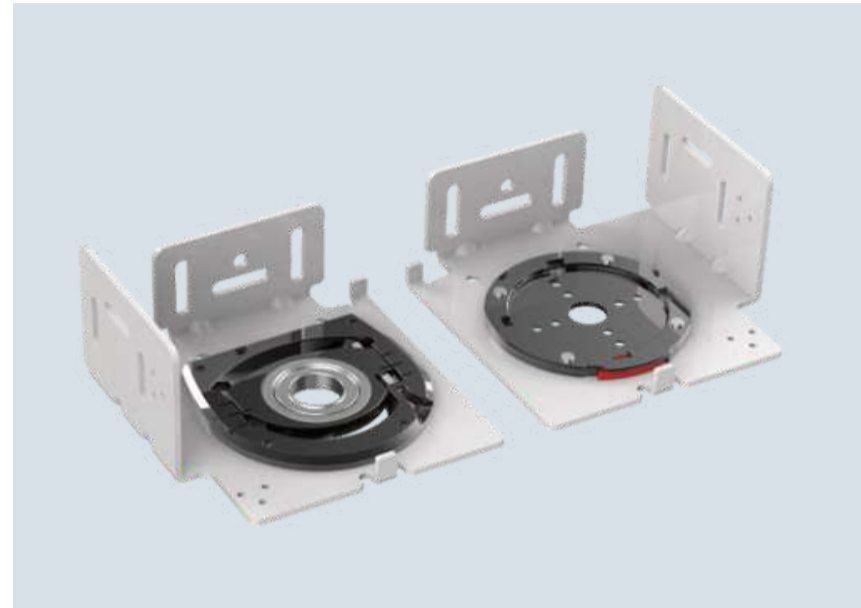


TEMPERATURE CONTROL

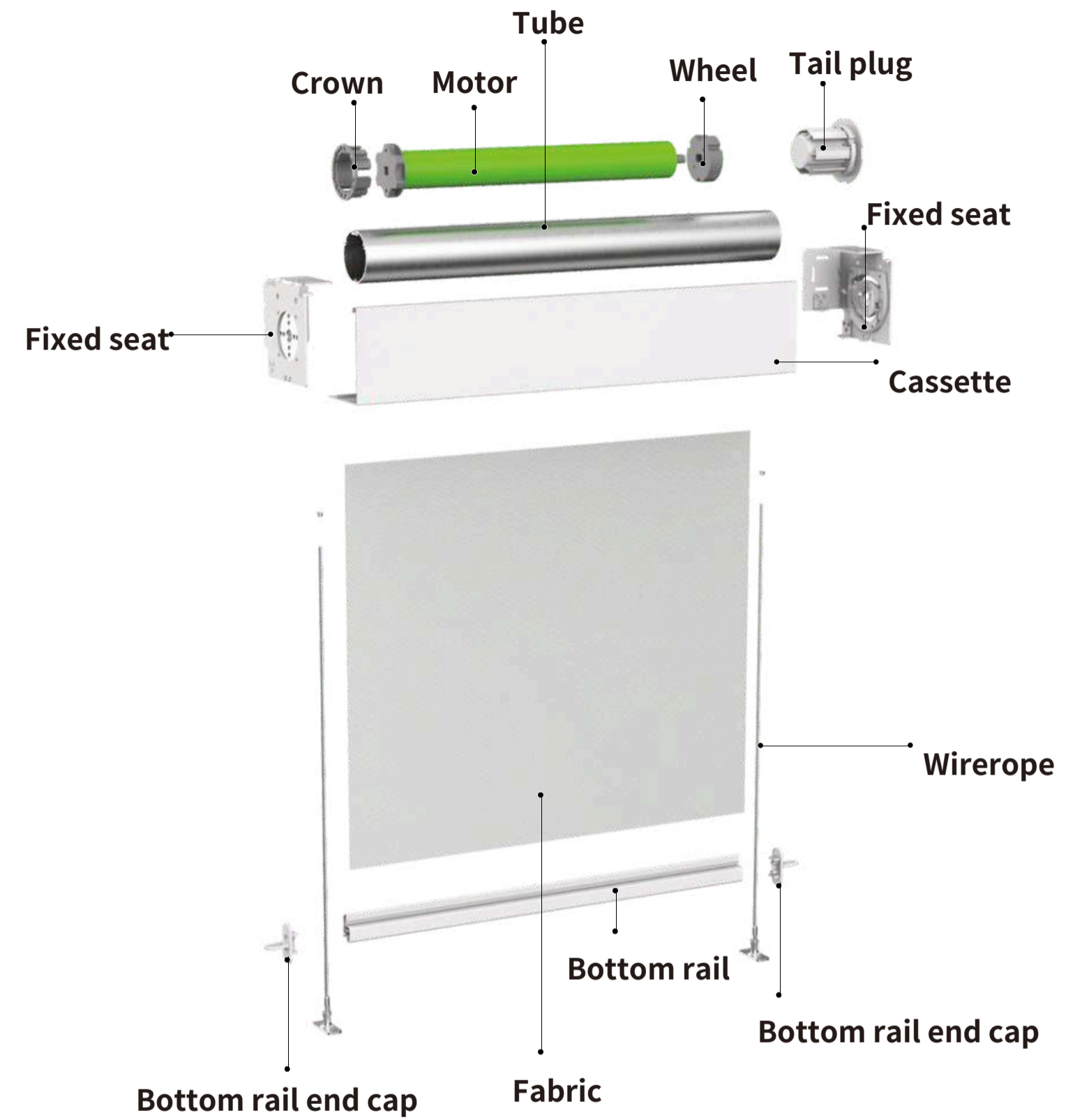


BEAUTIFY THE ENVIRONMENT

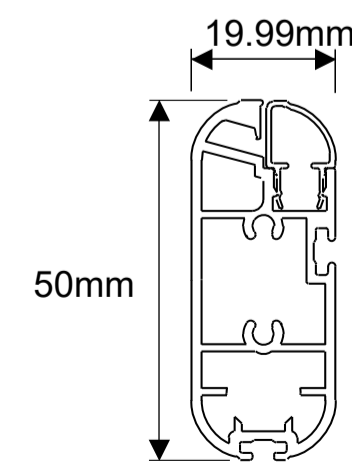
DK120-63 WIREROPE GUIDE WINDPROOF ROLLER BLINDS



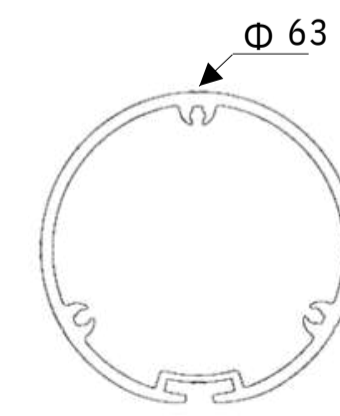
DK120-63 WIREROPE GUIDE WINDPROOF ROLLER BLINDS EXPLODED VIEW



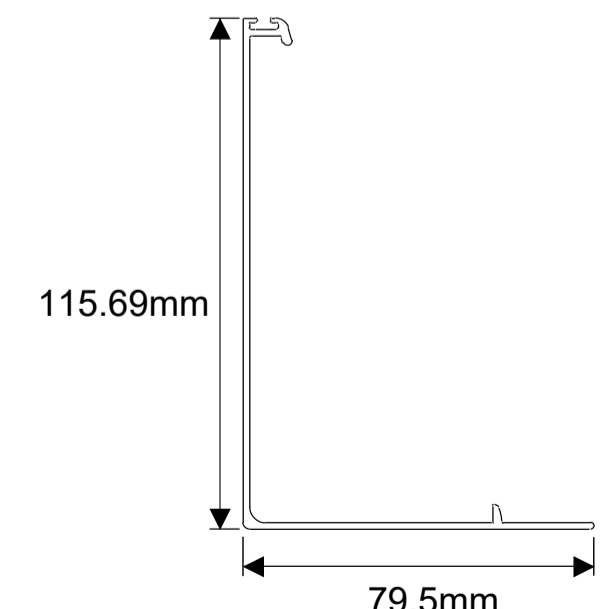
Profile size



Bottom rail



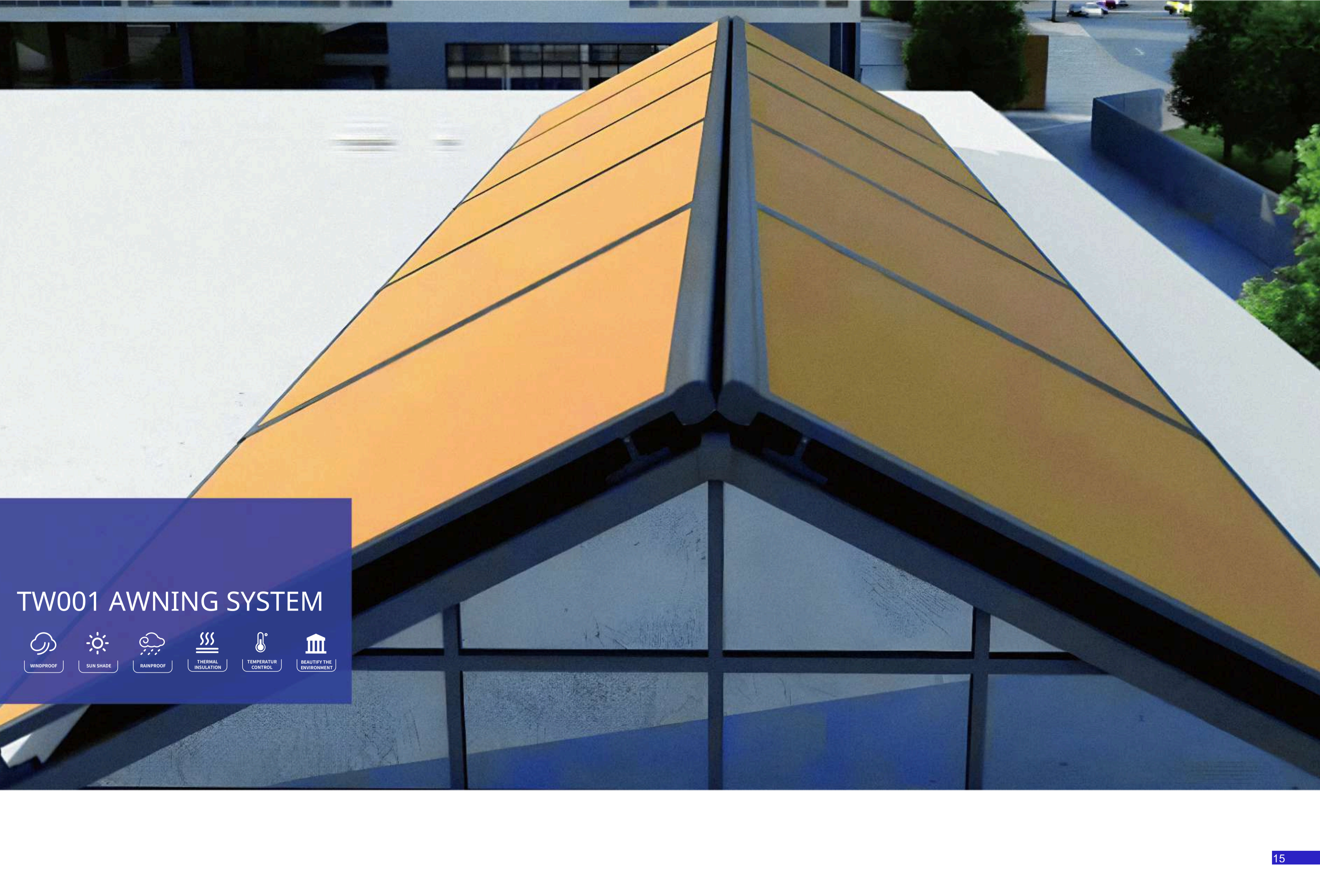
63 tube



Cassette



 AWNING SERIES

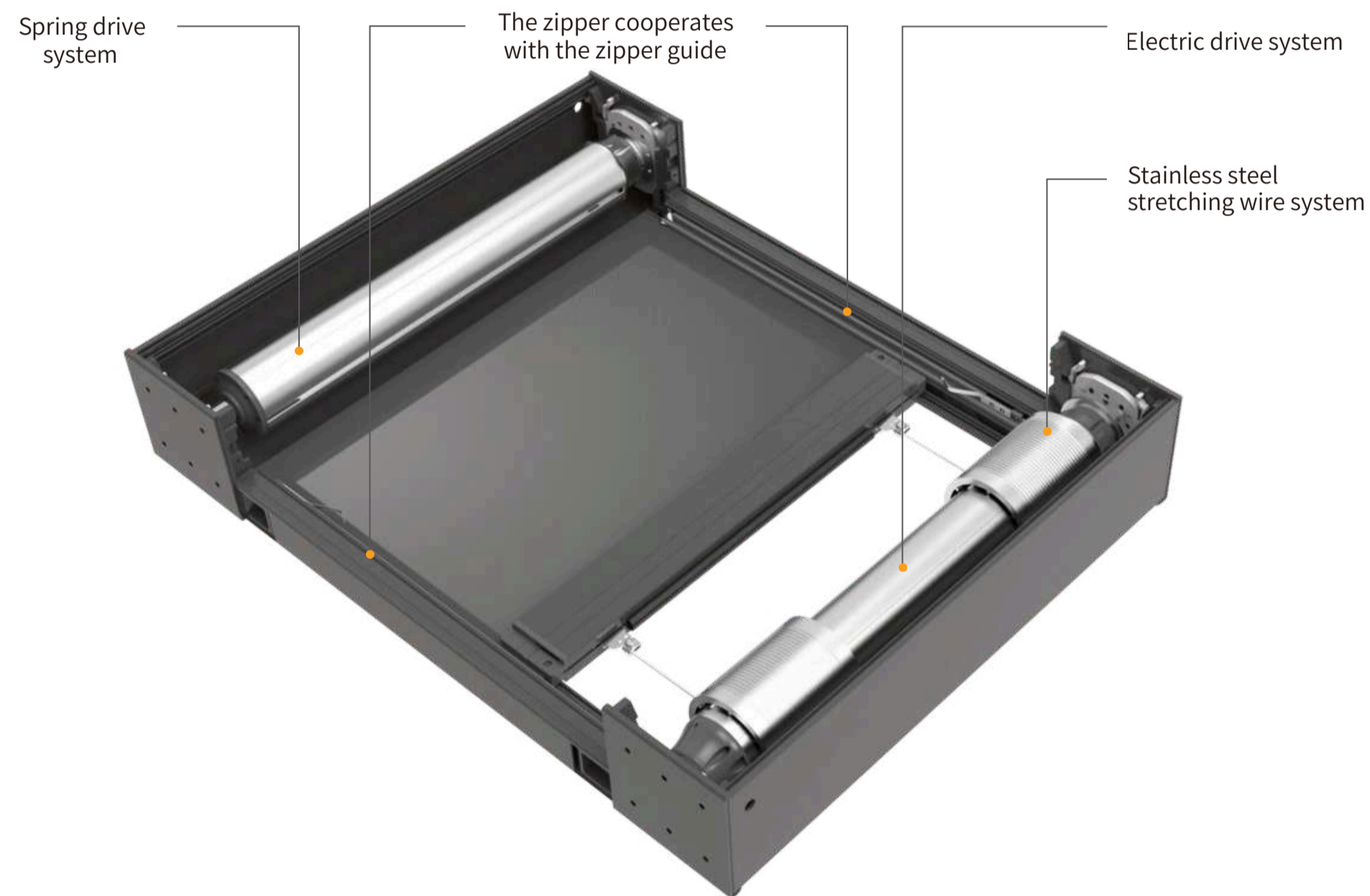


TW001 AWNING SYSTEM

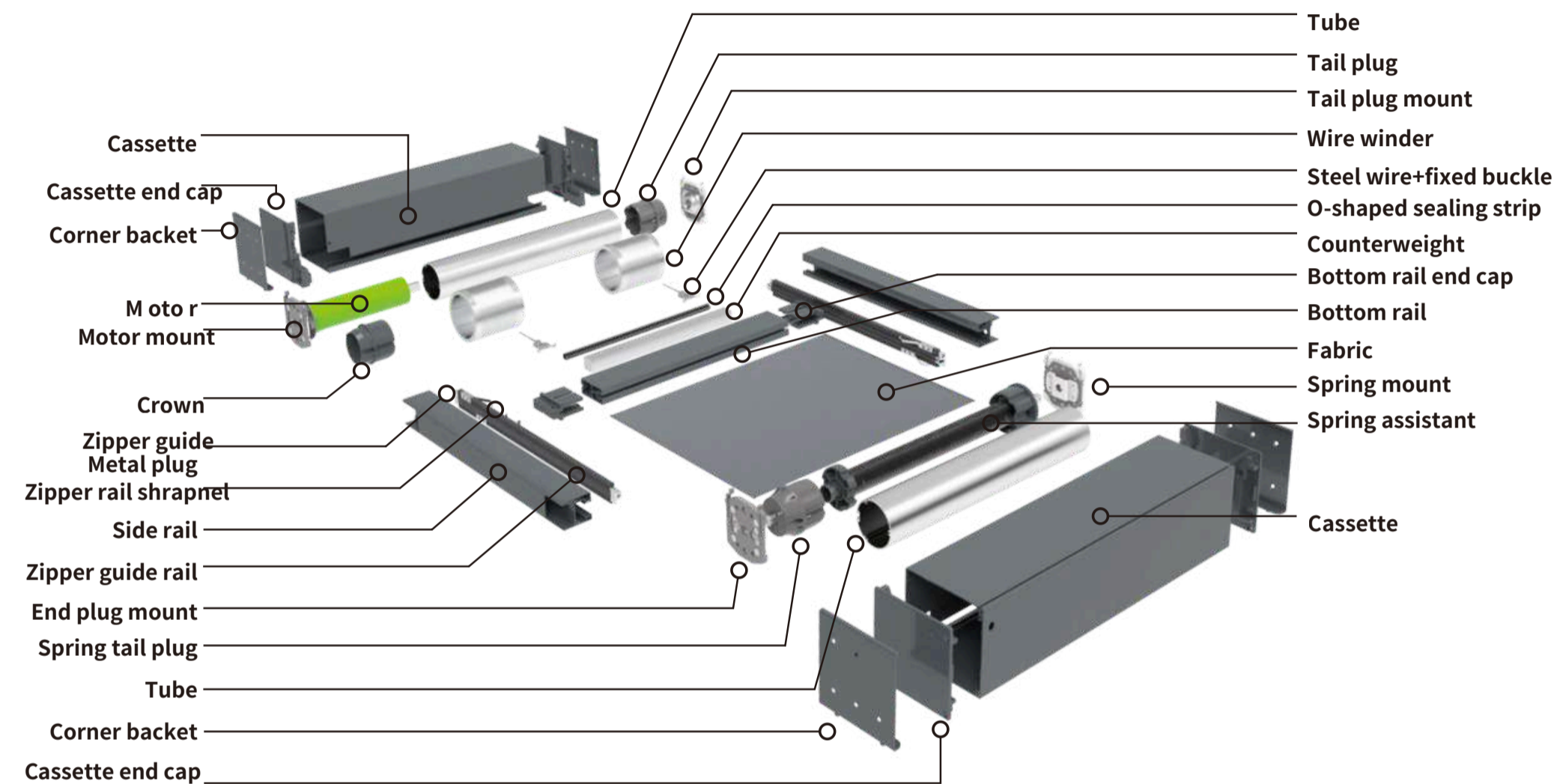
- 
WINDPROOF
- 
SUN SHADE
- 
RAINPROOF
- 
THERMAL INSULATION
- 
TEMPERATUR CONTROL
- 
BEAUTIFY THE ENVIRONMENT

TW001 AWNING SYSTEM

- ▶ Using the WR120B windproof roller blinds system, combining electric and spring systems.
- ▶ National standard 304 stainless steel wire rope for traction, aluminum alloy threaded reel for line retraction.
- ▶ Typically uses extra-thick 63mm tube.
- ▶ Recommended width under 3 meters, length under 4 meters. For wider widths, install a fabric support rail in the middle; suggest external mounting.

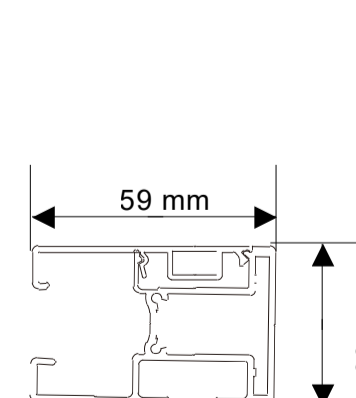


TW001 AWNING EXPLODED VIEW

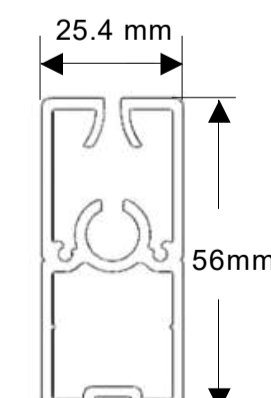


- ▶ Combine the electric system with the spring system to expand the windproof roller blinds into an awning system.
- ▶ The system can be installed either flat or at a large angle.
- ▶ The system uses high-strength rewinder made from 304 stainless steel wire and engineering plastic for the awning system, offering long life, excellent light blocking and sunshading effects.
- ▶ Installation Note: It is best to install under glass to prevent water accumulation on rainy days.

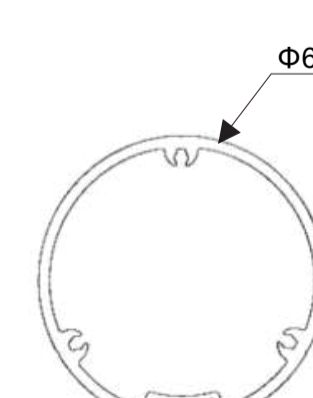
PrRoOfFilleL Esi SzleZE



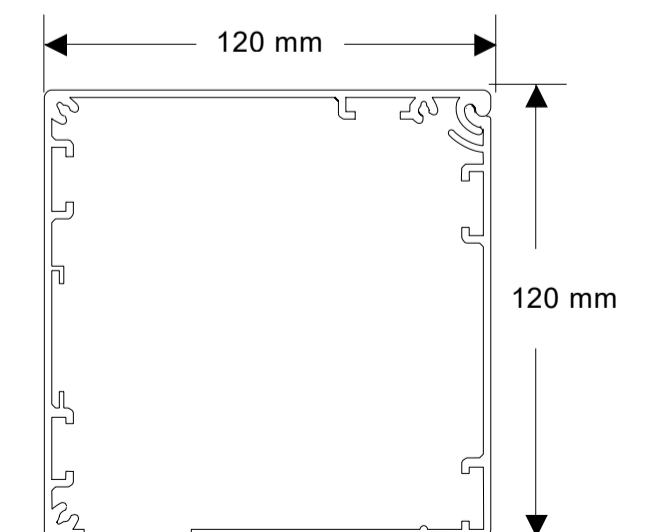
Side rail



Bottom rail



63 tube



Cassette



SR-60 AWNING



WINDPROOF



SUN SHADE



RAINPROOF



INSULATION™



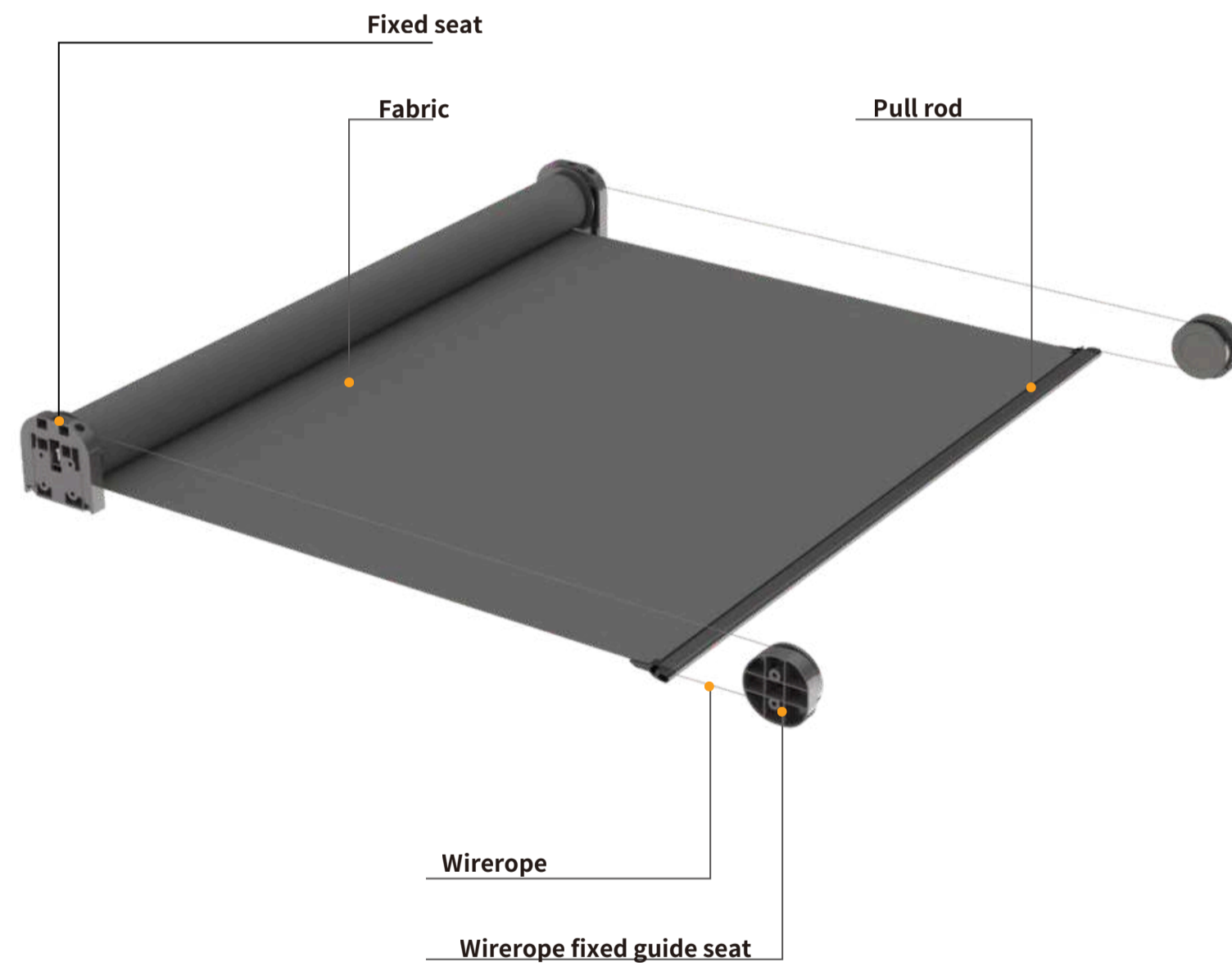
CONTROL



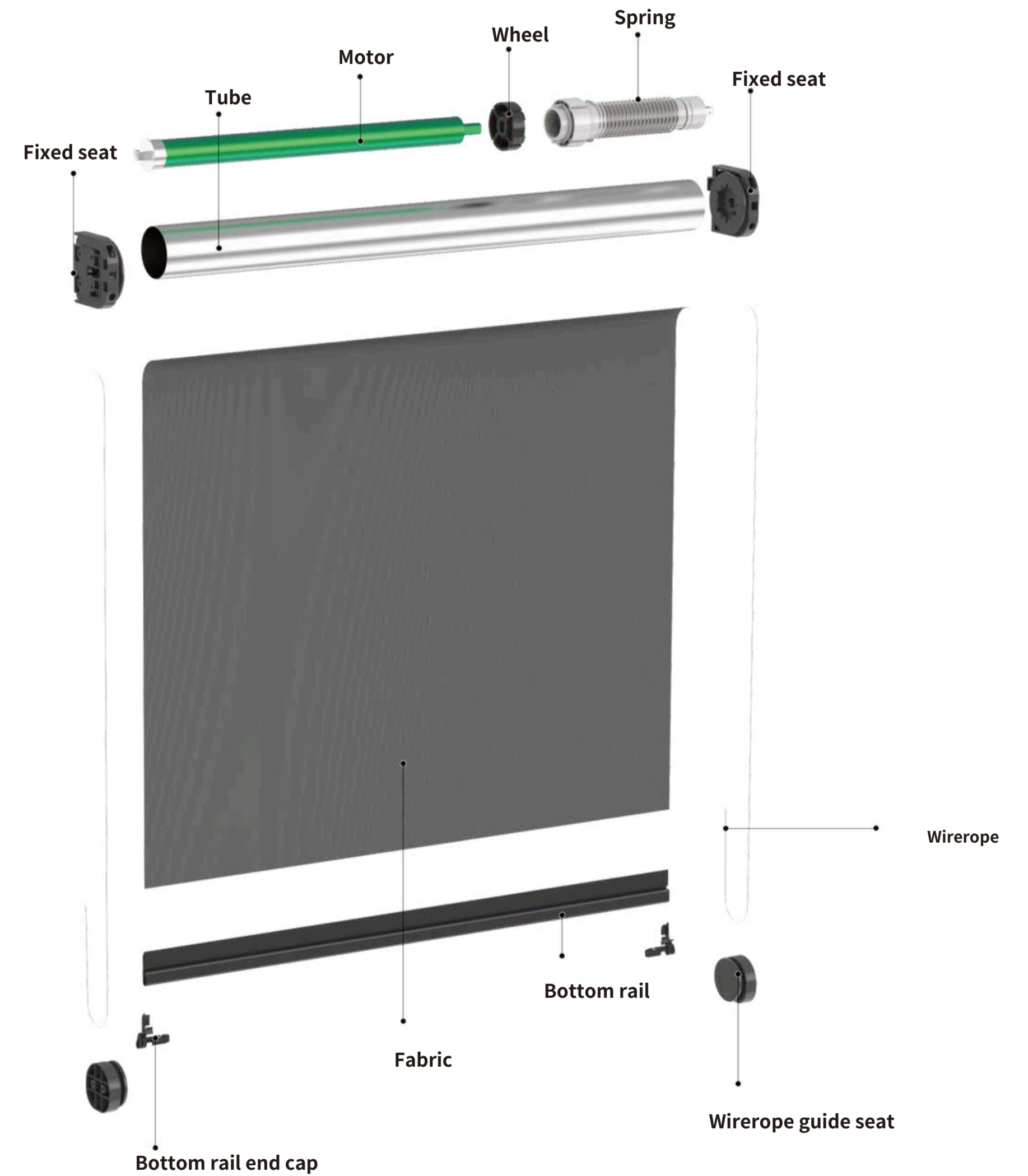
BEAUTIFY THE ENVIRONMENT

SR-60 INDOOR SKYLIGHT ELECTRIC STEEL WIREROPE ROLLER SYSTEM

- ▶ A dedicated system for small awning.
- ▶ Can be exclusively used indoors for sunrooms, without zippers and side rails.
- ▶ Equipped with the 35mm gapless motor.
- ▶ Width can be within 1.5 meters, length can reach up to 3 meters.



SR-60 AWNING EXPLODED VIEW



SR150 AWNING FOR SUNROOM



WINDPROOF



SUN SHADE



RAINPROOF



THERMAL INSULATION



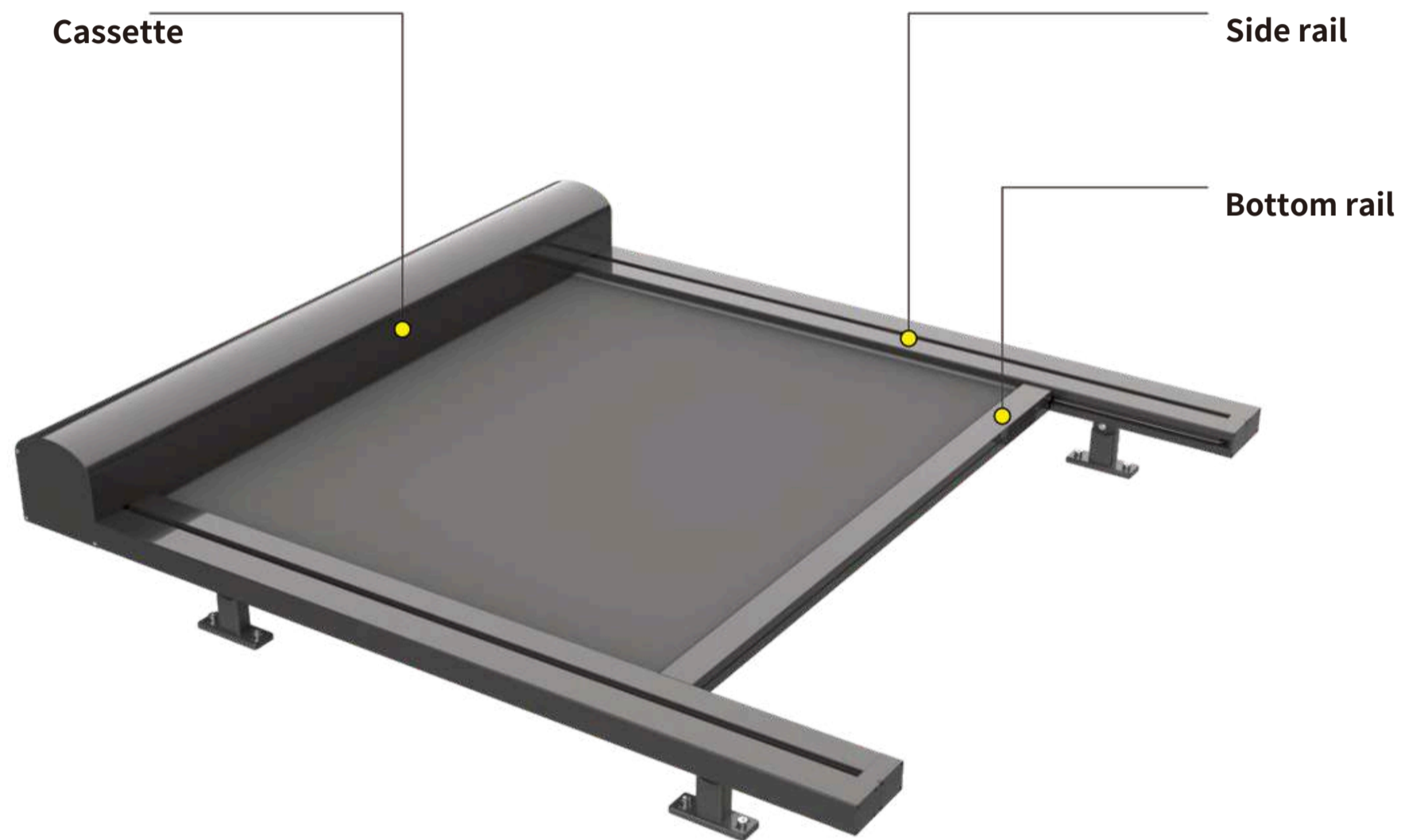
TEMPERATUR CONTROL



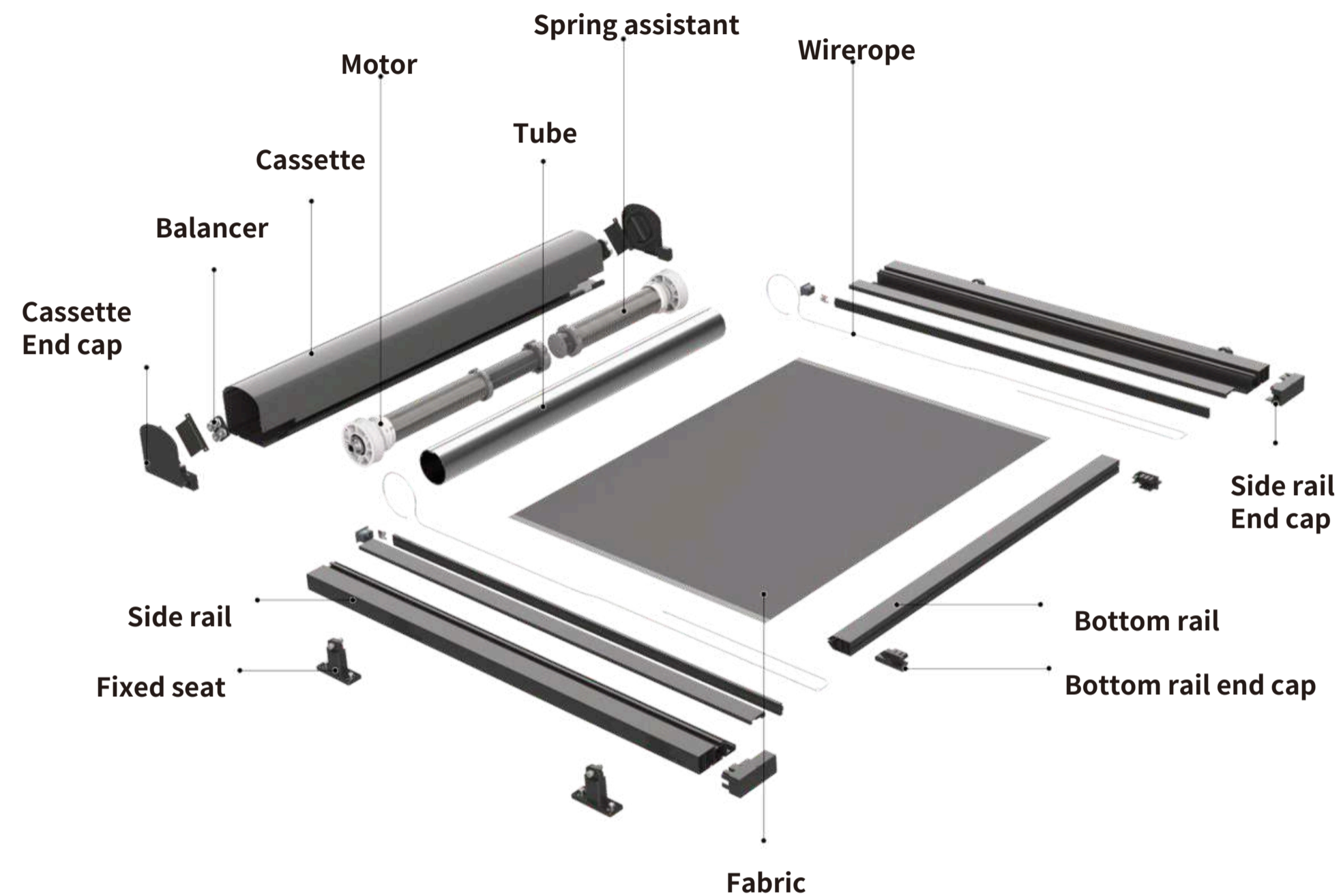
BEAUTIFY THE ENVIRONMENT

SR150 AWNING FOR SUNROOM

- ▶ Double spring FGS traction system. Snap-in side rails.
- ▶ Motorized operating system.
- ▶ Use 63mm thick tube, width not exceeding 4 meters,
- ▶ length not exceeding 5 meters.



SR150 AWNING EXPLODED VIEW

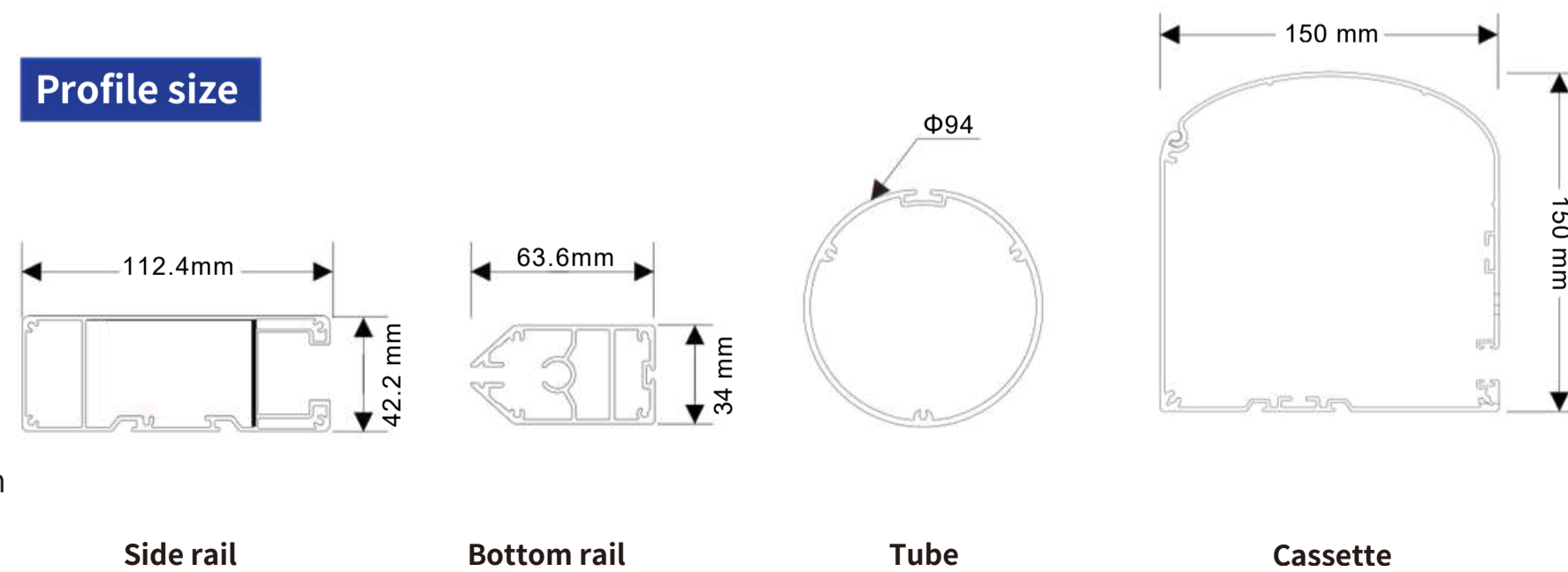


Combine the electric system with the spring system to expand the windproof roller blinds into an awning system; this system can be installed either flat or at a large angle.

The system uses the high-strength winder made of specially coated 316 stainless steel wire and engineering plastic for the awning system, offering long life, excellent light-blocking and sunshading effects.

Note: When installing outdoors, there must be a slope. If the width exceeds 3 meters, fabric support rail should be added to prevent water accumulation.

Profile size





WINDPROOF ROLLER BLINDS FABRIC



WINDPROOF



SUN SHADE



RAINPROOF



THERMAL
INSULATION



TEMPERATUR
CONTROL



BEAUTIFY THE
ENVIRONMENT



BASIC REQUIREMENTS FOR WINDPROOF ROLLER BLINDS APPLICATIONS

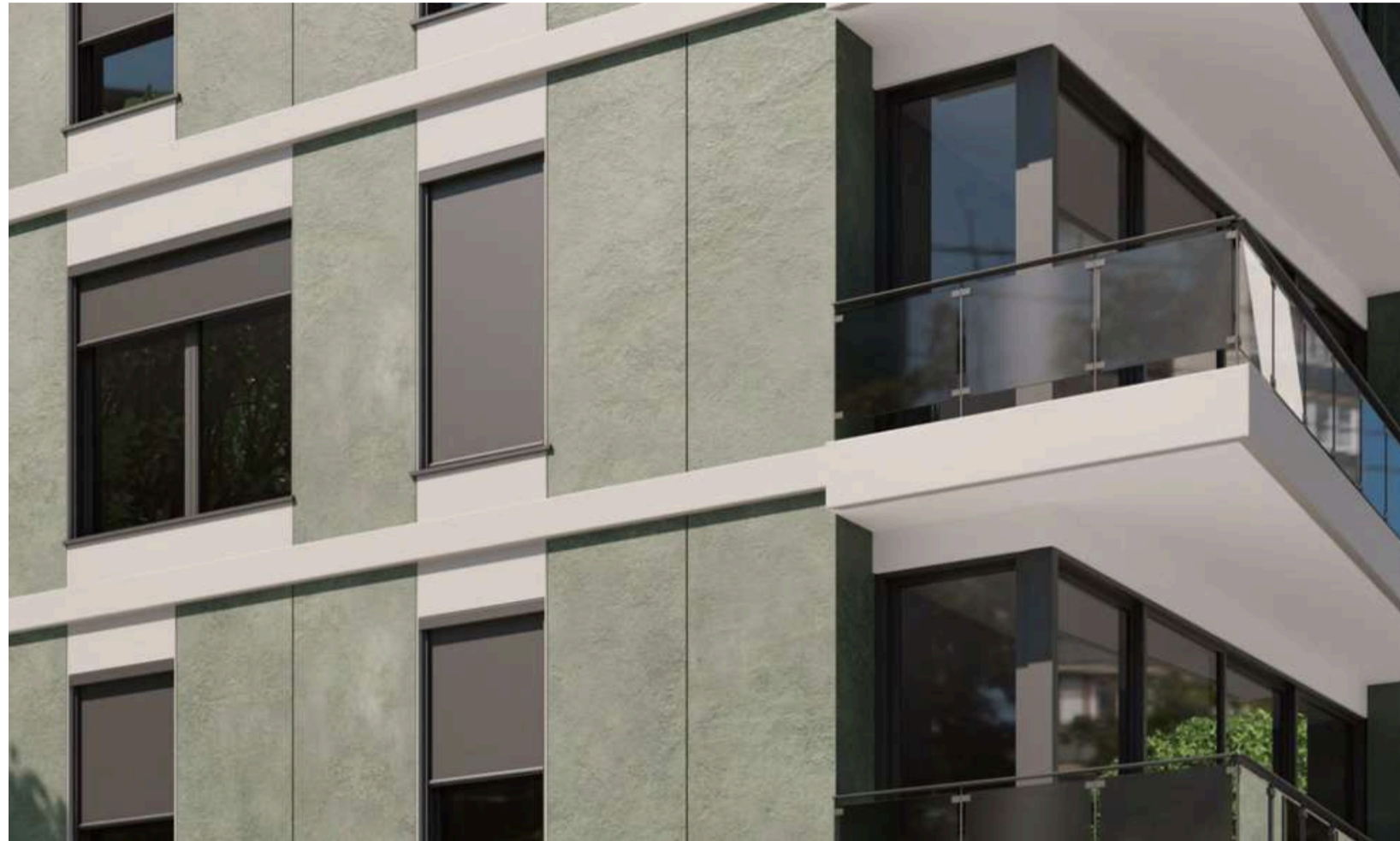
① Use professional-grade outdoor windproof roller blinds fabric.

- ▶ Have a tensile strength of over 2000N/5CM, capable of withstanding strong winds and gravity impacts.
- ▶ Tear strength greater than 100N.
- ▶ Colorfastness exceeding Level 8, acid and alkali resistance, ensuring over 10 years of use in harsh outdoor conditions.
- ▶ Thickness: 0.5~0.8mm.
- ▶ Good weldability, smooth seams, weld tear strength greater than 500N, pull-off force greater than 1000N/M.
- ▶ The shrinkage rate is less than 2%.
- ▶ The open porosity is optional.
- ▶ Specific fabric properties defined as needed.
- ▶ Operating temperature: -20°C to 100°C.

② Based on the basic environmental requirements of outdoor windproof roller blinds

- ▶ Meet the requirements for all-weather use across the entire area: For outdoor use, when the size is less than 2.5X2.5 meters, the wind resistance exceeds level 12; for indoor use, the wind resistance should also reach above level 8.
- ▶ Solutions available for widths over 6 meters and heights over 4 meters.
- ▶ Materials selected are reasonable, capable of normal long-life operation under harsh conditions such as strong acids, strong alkalis, severe cold and heat, and strong winds with heavy rain.
- ▶ Uses outdoor-specific zippers.
- ▶ Reasonable structure, exquisite details, durable system.
- ▶ The fabric is flat, stable, and durable.
- ▶ Multiple operating methods to meet different environmental usage requirements.
- ▶ Easy assembly and disassembly.

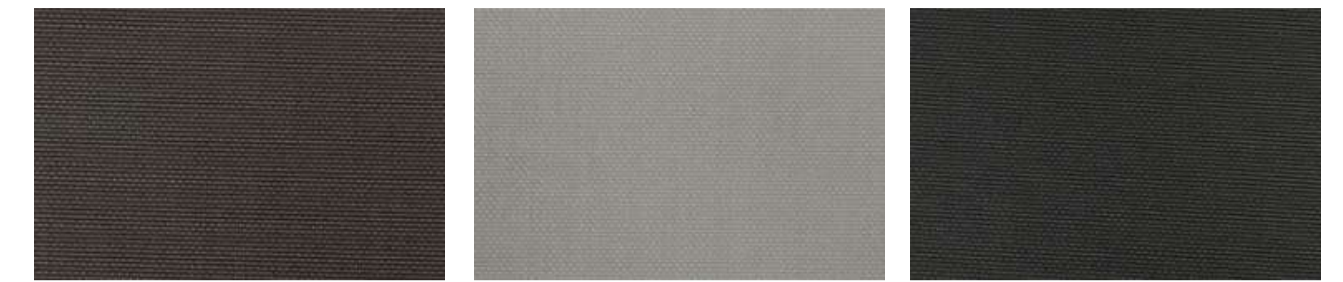
WINDPROOF ROLLER BLINDS FABRIC



Parameters

Composition	76%PVC+24%Polyester	
Width	3m	
Weight	630g/m ² ± 5%	
Thickness	0.7MM±5%	
Color Fastness	ISO 105 B02 8 AATCC 16 4	
Tensile strength	Warp Weft	≥2250N/5cm ≥1830N/5cm
Breaking Strength	Warp Weft	≥ 130 N ≥ 100 N
FR Standard	FR- NFPA 701 B1- GB17591 BS- 5867 Part2 TypeB B1- DIN4102	
Fabric Description	Blackout Fabric	
Openness Factor	0%	

Openness Factor
Blackout Fabric 0%



▶ NP23004060SP
Black & Brown

▶ NP2300505
OSP Grey

▶ NP2300404
OSP Black



▶ NP2300101
OSP White

Openness Factor
Blackout Fabric 1%

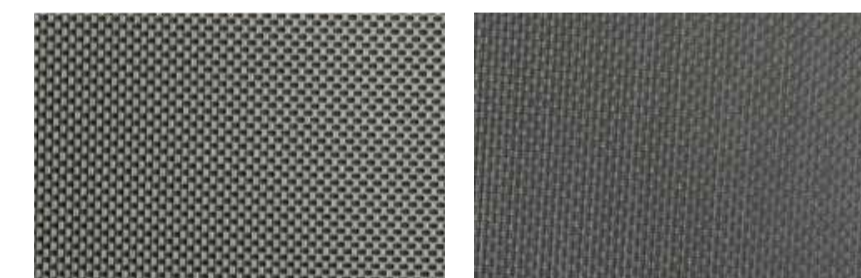


▶ NP3201101
OSP White

▶ NP3201505
OSP Grey

▶ NP32014050SP
Black & Grey

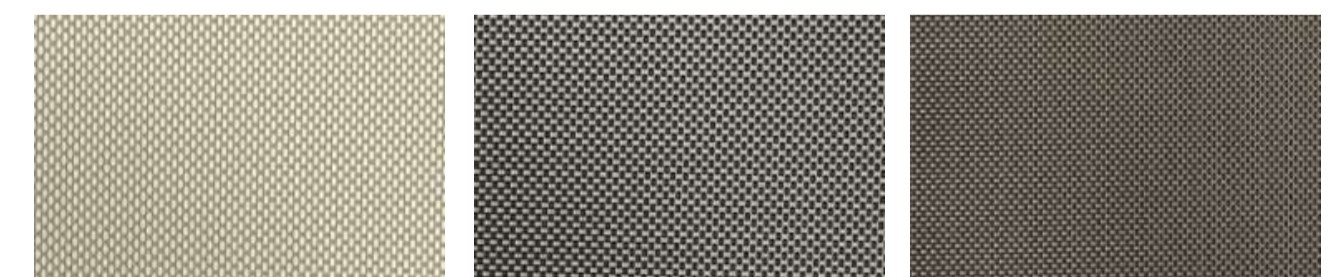
Openness Factor
Blackout Fabric 3%



▶ NP2034050CP
Black & Grey

▶ NP21035151CP
Dark & Grey

Openness Factor
Blackout Fabric 5%



▶ NP33051070CP
White & Beige

▶ NP33054050CP
Black & Grey

▶ NP33054060CP
Black & Brown

WINDPROOF ROLLER BLINDS FABRIC

5%

Openness Factor
Blackout Fabric



▶ NP33054040CP
Black



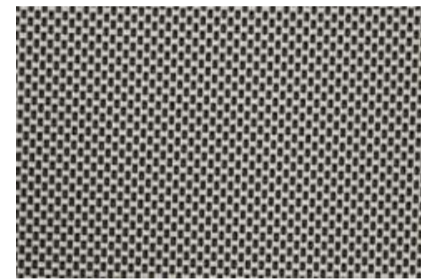
▶ NP42051010CP
White



▶ NP42054040CP
Black



▶ NP42051030CP
White & Linen



▶ NP42054050CP
Black & Grey



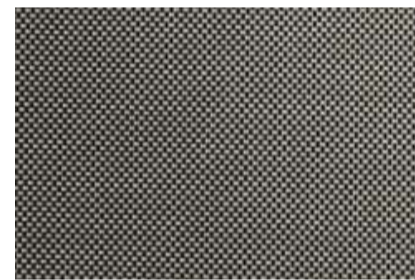
▶ NP43051010SP
White



▶ NP42056060SP
Brown



▶ NP42051050CP
White & Grey



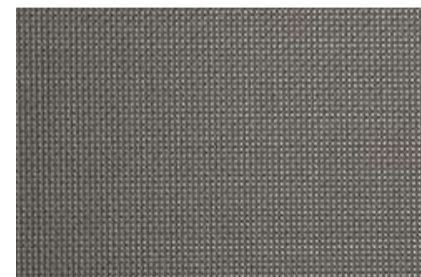
▶ NP43054050SP
Black & Grey

10%

Openness Factor
Blackout Fabric



▶ NP42104050CP
Black & Grey



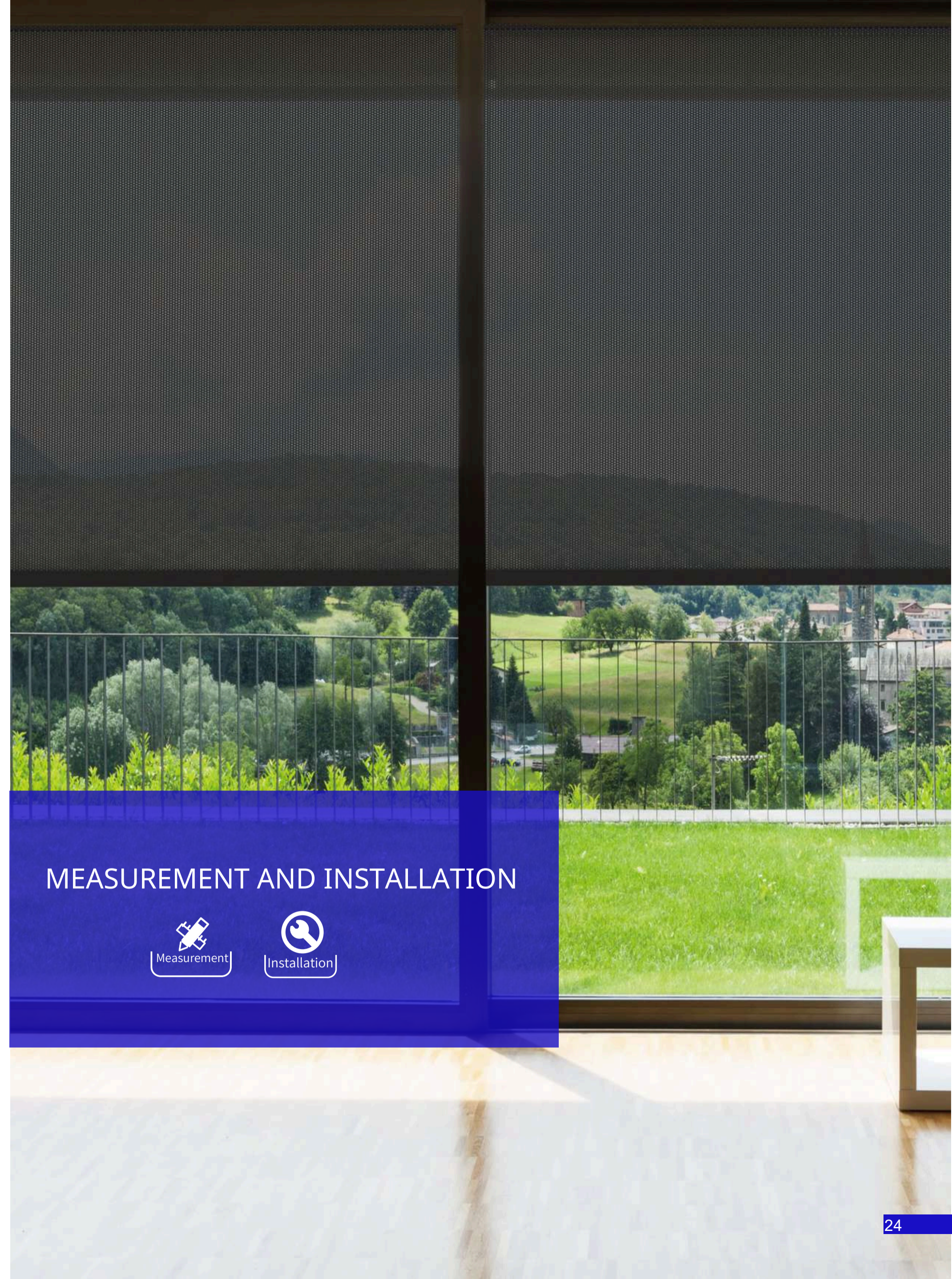
▶ NP42105050CP
Dark Grey

30%

Openness Factor
Blackout Fabric



▶ NP30304040CP
Black



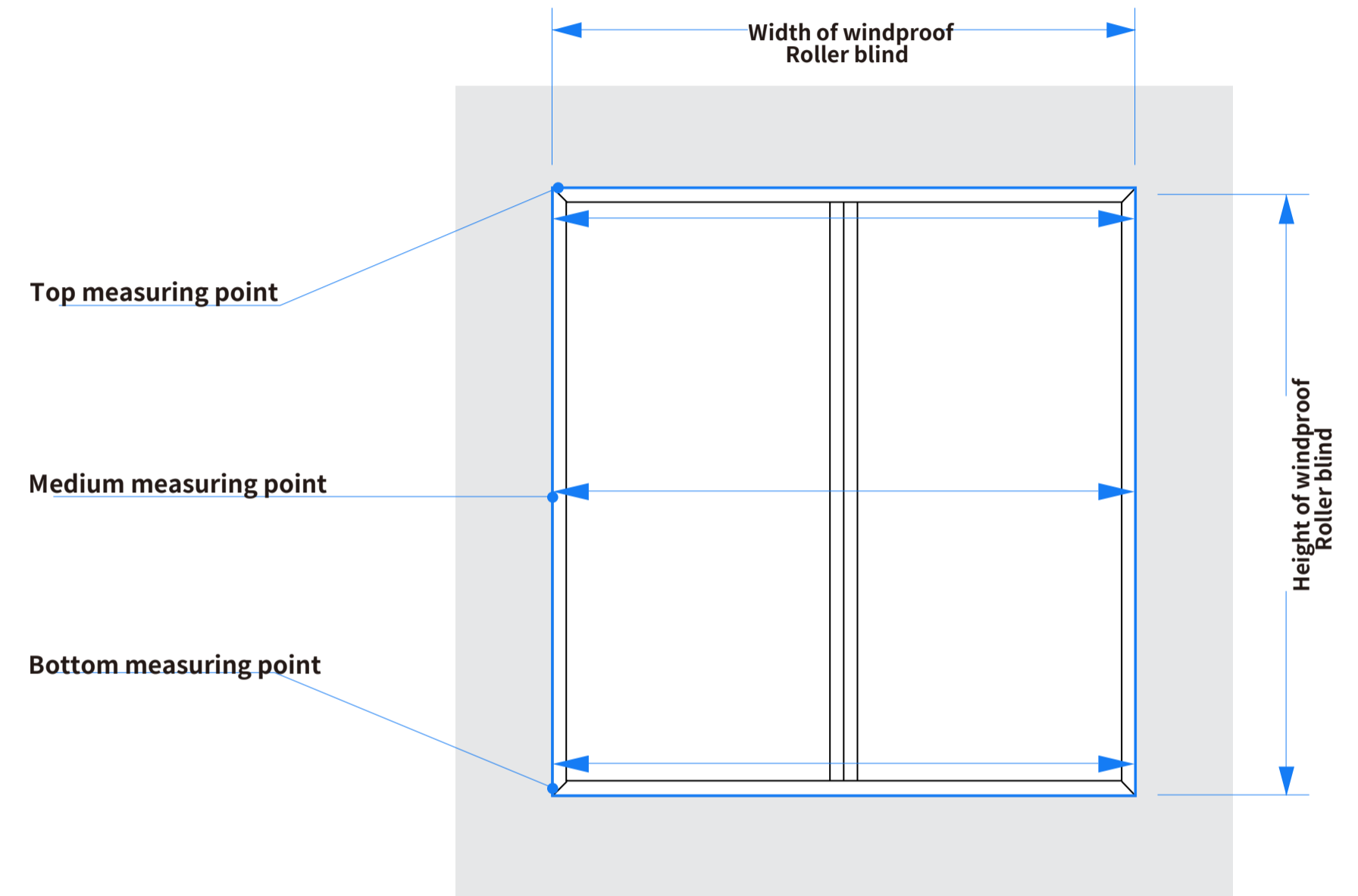
MEASUREMENT AND INSTALLATION





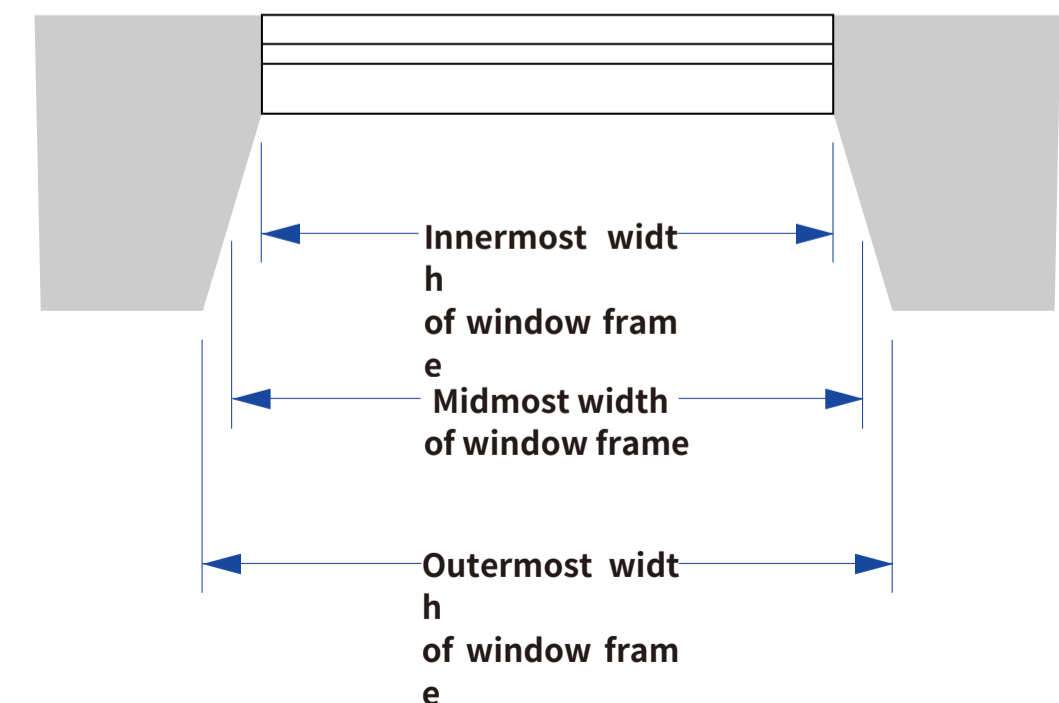
1. Check if the installation surface is uneven or tilted.
2. Ensure the installation position is secure.
3. Check for obstructions at the installation site.
4. Confirm whether to install on the front or side.
5. Verify the cover shell size, finished height, and width (for electric models, confirm power supply location).
6. Use a laser level to establish a baseline, measure, and inspect during installation.
7. Fix one screw every 0.5 meters on the side rails, or use strong structural adhesive; hard structural adhesive is preferred.

**The three -point measurement takes the minimum value
The width and height are normally reduced by 2~3mm**



Predicted diagonal window frames

According to the installation position of the windproof blind cover a and side rails in the window frame Determine the width and height of the windproof roller blind



WINDPROOF ROLLER BLINDS APPLICATION CASE

